



# BIG

**BELIEVE • INSPIRE • GROW**

# THINGS ARE HAPPENING IN MISD COMMUNITY EDUCATION

**MISD**  
*Community*  
**Education**

Lifelong learning,  
close to home.

**Spring 2015 Class Schedule**  
January - May

Community Education Classes Presented by  
Mesquite Independent School District



**Spring 2015 Class Schedule  
January - May**

**TABLE OF CONTENTS**

**Big things are  
happening in  
your community.**

Mesquite ISD Community Education offers **BIG** opportunities for lifelong learning close to home! When you believe in yourself, you will inspire others and grow beyond all expectations. Class topics include computers, Spanish, finance, art, music, career opportunities, parent classes, and personal enrichment! We also offer over 350 year-round online courses as well as several career certificate programs.

Mesquite ISD Community Education can help you believe, inspire, and grow, close to home.

**Believe • Inspire • Grow**

**COMMUNITY CLASSES . . . . . 3**

You Can Paint . . . . . 3

Zentangle . . . . . 4

Get Your Craft On . . . . . 4

Stitch It Up . . . . . 6

Tech Support. . . . . 7

We've Got the Beat. . . . . 8

Camp Gladiator. . . . . 8

¿No Habla Español? . . . . . 9

F.Y.I. . . . . 9

Make a Difference: Motivate, Encourage, Inspire . . . . 10

**ONLINE CLASSES . . . . . 11**

Ed2Go . . . . . 11

Virtual Drive . . . . . 12

**MINOR-IN-POSSESSION . . . . . 13**

Alcohol Awareness Class . . . . . 13

**CLASSES FOR KIDS . . . . . 14**

You Can Paint . . . . . 14

Got Skills? . . . . . 15

We've Got the Beat! . . . . . 16

Zentangle . . . . . 16

**YOUTH PROGRAMS . . . . . 17**

Drama Kids International . . . . . 17

DYS (dance, cheer, self-defense/anti-kidnapping) . . . 18

Young Rembrandts Drawing Classes. . . . . 19

Friday Nite Live . . . . . 19

**REGISTRATION AND POLICY INFORMATION 20**

Policies . . . . . 20

Class Location . . . . . 21

Community Education Staff and Contact Information. . 22

Registration Form . . . . . 23



**IF THE WEATHER OUTSIDE IS FRIGHTFUL...**

**Listen to KEOM 88.5 FM**  
for information  
regarding weather-  
related class  
cancellations and  
delays.



# COMMUNITY CLASSES

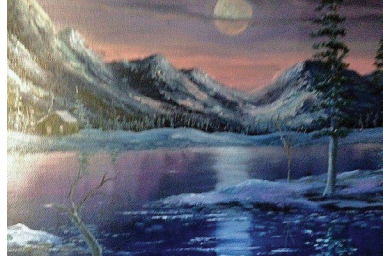
Community Classes are dedicated to providing quality education in a variety of subjects to students of all ages. We offer many diverse classes, filling both academic and enrichment needs.

*"A true artist is not one who is inspired, but one who inspires others."*  
~Salvador Dali

# YOU CAN PAINT

## You Can Paint

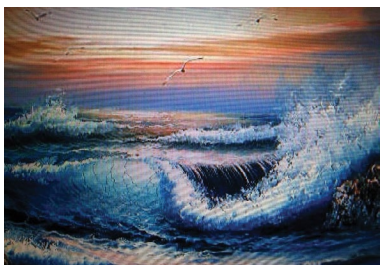
Master artist Robert Garden uses his precise, step-by-step method of teaching in this unique painting class. You will learn basic fundamentals with timesaving techniques, the science of color, brush loading and perspective. Complete a painting you will be proud to frame and display! All supplies are provided (professional-grade paint, various brushes, an arranged palette, canvas, medium and easel). All you have to do is bring paper towels and wear old clothes! No experience necessary. (Ages 13 & up)



**Moonlight in the Rockies (on black canvas)**  
Class Number . . . . . 5227-SP15  
Date . . . . . Saturday, Jan. 17  
Time . . . . . 9:30 a.m. – 12:30 p.m.  
Tuition . . . . . \$44  
Location . . . . . Poteet – Room 114  
Instructor . . . . . Robert Garden



**Italian Villa by the Sea (with pallet knife)**  
Class Number . . . . . 5223-SP15  
Date . . . . . Saturday, Feb. 21  
Time . . . . . 9:30 a.m. – 12:30 p.m.  
Tuition . . . . . \$44  
Location . . . . . Poteet – Room 114  
Instructor . . . . . Robert Garden



**Crashing Waves**  
Class Number . . . . . 5224-SP15  
Date . . . . . Saturday, March 21  
Time . . . . . 9:30 a.m. – 12:30 p.m.  
Tuition . . . . . \$44  
Location . . . . . Poteet – Room 114  
Instructor . . . . . Robert Garden



**Northern Lights (on black canvas)**  
Class Number . . . . . 5225-SP15  
Date . . . . . Saturday, April 18  
Time . . . . . 9:30 a.m. – 12:30 p.m.  
Tuition . . . . . \$44  
Location . . . . . Poteet – Room 114  
Instructor . . . . . Robert Garden



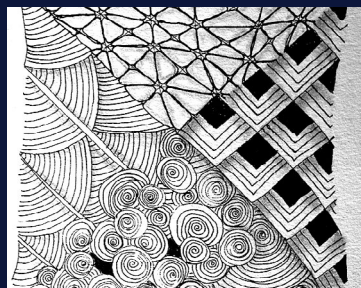
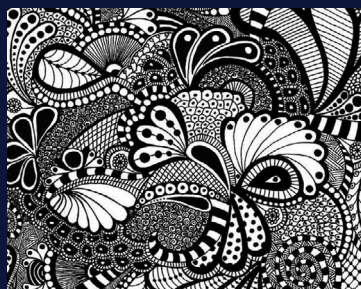
**Hummingbird at a Hibiscus (watercolor)**  
Class Number . . . . . 5226-SP15  
Date . . . . . Saturday, May 16  
Time . . . . . 9:30 a.m. – 12:30 p.m.  
Tuition . . . . . \$44  
Location . . . . . Poteet – Room 114  
Instructor . . . . . Robert Garden

## Zentangle

“Zentangle has become an international phenomenon that now has applications in stress reduction, education, therapy, and even motivational training.”

– Cathy Malchiodi, PhD, LPCC, LPAT;  
Psychology Today Magazine

What is Zentangle? Zentangle is a method of meditative drawing. It is easy-to-learn, relaxing, and a fun way to create beautiful images by drawing structured patterns. It increases focus, creativity, and provides artistic satisfaction along with an increased sense of personal well-being. Strengthen your brain and join instructor Jaci Mouser as she guides you through the creative process of Zentangle. You do not have to be an artist or have artistic talent. Almost anyone can Zentangle! (Ages 10 & up)



Class Number . . . . . 2166-SP15A  
Date . . . . . Tuesday, March 3  
Time . . . . . 6 p.m. – 8 p.m.  
Tuition . . . . . \$18  
Location . . . . . PDC – Room 215  
Instructor . . . . . Jaci Mouser

Class Number . . . . . 2166-SP15B  
Date . . . . . Tuesday, May 5  
Time . . . . . 6 p.m. – 8 p.m.  
Tuition . . . . . \$18  
Location . . . . . PDC – Room 215  
Instructor . . . . . Jaci Mouser

# GET YOUR CRAFT ON!

## Deco Mesh Wreath

Learn to design a creative deco mesh wreath that will add a punch of color and whimsy to any entry door. Instructor Vickie Cline will teach you how to transform rolls of deco mesh into an amazing, custom wreath. Students will learn how to choose the appropriate materials and discover the latest techniques involved in making an impressive deco mesh wreath, whether for fun or profit. (Supply list provided at time of registration.) (Ages 14 & up)

### Spring Wreath

Class Number . . . . . 5541-SP15  
Date . . . . . Tuesday, March 3  
Time . . . . . 6 – 8 p.m.  
Tuition . . . . . \$22  
Location . . . . . PDC – Room 211  
Instructor . . . . . Vickie Cline



### Summer Wreath

Class Number . . . . . 5540-SP15  
Date . . . . . Monday, April 20  
Time . . . . . 6 – 8 p.m.  
Tuition . . . . . \$22  
Location . . . . . PDC – Room 211  
Instructor . . . . . Vickie Cline





### Personalized Glass Block Light

Design an amazing, personalized glass block that will add decorative light to any space. Students will have fun learning how to transform a basic glass block into a work of art. Your personalized glass block light will make a wonderful gift! All supplies are included. (Ages 14 & up)

*Class Number* . . . . . 2589-SP15  
*Date* . . . . . Tuesday, Feb. 17  
*Time* . . . . . 6 p.m. – 8 p.m.  
*Tuition* . . . . . \$36  
*Location* . . . . . Watt A Find  
*Instructor* . . . . . Terri Kokoszka

### Grapevine Wreath with Initial

Learn to design a grapevine wreath customized with your initial. This item will add personalization to your front door or any wall in your house. Students will learn how to attach burlap and other items to make the wreath just the way you want it. Bring your own letter, adornments, and a grapevine wreath in the size of your choice. (Ages 14 & up)



*Class Number* . . . . . 4539-SP15  
*Date* . . . . . Thursday, Mar. 5  
*Time* . . . . . 6 p.m. – 8 p.m.  
*Tuition* . . . . . \$35  
*Location* . . . . . Watt A Find  
*Instructor* . . . . . Terri Kokoszka

### Subway Art

Learn to design and personalize a 12" x 24" piece of wood into a wonderful subway picture. This decorative piece will add ambiance to your home or make a wonderful gift. You will learn how to paint and distress the wood as well as apply vinyl lettering. Bring ideas of what you want your subway art to say and we will transform the wood into a work of art. All supplies will be included. (Ages 14 & up)



*Class Number* . . . . . 4542-SP15  
*Date* . . . . . Thursday, May 7  
*Time* . . . . . 6 p.m. – 8 p.m.  
*Tuition* . . . . . \$35 (all supplies included)  
*Location* . . . . . Watt A Find  
*Instructor* . . . . . Terri Kokoszka

# ATTENTION MISD EMPLOYEES

District employees can receive **\$5 off** select classes! Be sure to mention that you are an employee when registering for a class. Plus, count up to 45 hours of any Mesquite ISD Community Education classes toward your **Master's Alternative Multi-Track Option!**



### Personalized Cross

Learn to design and personalize a 24" cross for any occasion. You will learn how to paint, distress, apply vinyl, and make a beautiful burlap bow. All supplies are included. (Ages 14 & up)



*Class Number* . . . . . 4541-SP15  
*Date* . . . . . Monday, Apr. 6  
*Time* . . . . . 6 p.m. – 8 p.m.  
*Tuition* . . . . . \$45  
*Location* . . . . . Watt A Find  
*Instructor* . . . . . Terri Kokoszka

### Chalk Painting Workshop

Join us for a fun filled day of redesigning furniture with chalk paint. We will show you some of the top name brands, teach you how to make your own chalk paint, and show you finishing techniques including silver, bronze, gold leaf, wax, and crackle. A piece of wood furniture will be provided for each student. Choices will include a small table or chair and may include other choices we will have available at the time of the class. You pick your piece, finish it, and take it home.



*Class Number* . . . . . 4544-SP15  
*Date* . . . . . Saturday, April 18  
*Time* . . . . . 10 a.m. – 2 p.m.  
*Tuition* . . \$125 (supplies included)  
*Location* . . . . . Watt A Find  
*Instructor* . . . . . Terri Kokoszka

## NEED A SPECIAL CLASS?

If your group need a particular class (for example, a CPR class), give Mesquite ISD Community Education a call! You set the date and time, and we secure a location and instructor. It's that easy! For more information, call us at 972-882-5277.



# STITCH IT UP!

## Sewing 101

Whether you have never touched a sewing machine before, haven't sewed in years, or just want to review the fundamentals, this class is for you. You will learn the parts of the machine, sewing terminology, and create a beautiful, seasonal table runner. This is a great class for adults and youth. All materials and supplies will be provided. (Ages 12 & up)

*Class Number* . . . . . 4538-SP15A  
*Date* . . . . . Tuesday, Feb. 10  
*Time* . . . . . 6 p.m. – 9 p.m.  
*Tuition* . . . . . \$45  
*Location* . . . . . Watt A Find  
*Instructor* . . . . . Sandy Smith

*Class Number* . . . . . 4538-SP15B  
*Date* . . . . . Wednesday, April 15  
*Time* . . . . . 6 p.m. – 9 p.m.  
*Tuition* . . . . . \$45  
*Location* . . . . . Watt A Find  
*Instructor* . . . . . Sandy Smith

## Sewing 102 (Make an Apron)

Aprons are all the rage! Increase your sewing skills by making a stylish hostess apron. This is a great follow up from Sewing 101. Materials can be purchased before class at Watt A Find, or students may bring their own. (Supply list provided at time of registration.) (Ages 12 & up)

*Class Number* . . . . . 4537-SP15  
*Date* . . . . . Wednesday, Mar. 18  
*Time* . . . . . 6 p.m. – 9 p.m.  
*Tuition* . . . . . \$30  
*Location* . . . . . Watt A Find  
*Instructor* . . . . . Sandy Smith

## Crochet Basics

It's not as hard as you think! Crocheting is fun and relaxing. Learn the basic stitches that you can use to create everything from afghans to clothing, as well as gifts for friends and family. Lessons include an introduction to reading patterns. Instructor Linda Rhodes has over 40 years of experience. Each student will need to purchase one skein of worsted weight yarn and one crochet hook (size H, I, or J) (Ages 14 & up)

*Class Number* . . . . . 4501-SP15  
*Date* . . . . . Wed., Feb. 4 – Mar. 4  
*Time* . . . . . 6 – 8 p.m.  
*Tuition* . . . . . \$49  
*Location* . . . . . PDC – Room 213  
*Instructor* . . . . . Linda Rhodes

## Crochet Club

If you know the basics, this is the class for you. Learn advanced techniques that will help you gain the confidence to tackle those projects you have been putting off. Share patterns and ideas with others who love the art of crochet. Participants bring their own projects to class. Instructor Linda Rhodes has over 40 years of experience. Students must have completed the Crochet Basics class or be proficient in crochet. (Ages 14 & up)

*Class Number* . . . . . 4524-SP15  
*Date* . . . . . Mon., Feb. 2 - Mar. 2  
*Time* . . . . . 6 – 8 p.m.  
*Tuition* . . . . . \$44  
*Location* . . . . . PDC – Room 213  
*Instructor* . . . . . Linda Rhodes

## Piecing it Together: Five Yard Quilt

The Five Yard Quilt is the perfect project for the beginning quilter. This is a three-part session. In the first class, students will select material and begin cutting, using a rotary cutter. In the second class, begin piecing your quilt, and in the third class, you will complete the "Five Yard Quilt". Supplies can be purchased before class at Watt A Find, or students may bring their own. (Supply list provided at time of registration.) (Ages 12 & up)

*Class Number* . . . . . 4545-SP15  
*Date* . . . . . Thursdays, Mar. 26 – Apr. 9  
*Time* . . . . . 6 p.m. – 9 p.m.  
*Tuition* . . . . . \$90  
*Location* . . . . . Watt A Find  
*Instructor* . . . . . Sandy Smith

## Valentine Wall Hanging

Enjoy learning new sewing techniques while creating your own seasonal wall hanging. Some knowledge of sewing is needed. Materials to complete the project are provided in the class.

*Class Number* . . . . . 4543-SP15  
*Date* . . . . . Thursday, Jan. 29  
*Time* . . . . . 6 p.m. – 9 p.m.  
*Tuition* . . . . . \$45  
*Location* . . . . . Watt A Find  
*Instructor* . . . . . Sandy Smith

## Quilting 101

Learn quilting techniques such as how to use a rotary cutting tool, how to properly read a pattern, and more. Students will cut their own fabric and then piece together a table runner. They will add a border and learn basic machine quilting and binding. Supplies can be purchased before class at Watt A Find, or students may bring their own. (Supply list provided at time of registration.) (Ages 12 & up)

*Class Number* . . . . . 4536-SP15  
*Date* . . . . . Thursdays, Feb. 5 – Feb. 12  
*Time* . . . . . 6 p.m. – 9 p.m.  
*Tuition* . . . . . \$60  
*Location* . . . . . Watt A Find  
*Instructor* . . . . . Deanna Daugherty

## Quilted Tote Bag

Come join the fellowship of quilting with friends. In this class, you will receive simple and straightforward instructions on basic piecing and quilting techniques. Some sewing experience is required. All supplies are included with a variety of popular colors and patterns to choose from. (Ages 12 & up)

*Class Number* . . . . . 4321-SP15  
*Date* . . . . . Thursdays, Apr. 23 – Apr. 30  
*Time* . . . . . 6 p.m. – 9 p.m.  
*Tuition* . . . . . \$60  
*Location* . . . . . Watt A Find  
*Instructor* . . . . . Deanna Daugherty

# TECH SUPPORT

## Intro to Microsoft Word

Microsoft Word is a word processing program that allows users to efficiently create professional-looking documents. This program makes editing and revising easy. In this class, you will learn the basic features of Microsoft Word and create your own professional documents with ease. (Ages 14 & up)

*Class Number* ..... 1005-SP15  
*Date* ..... Tuesdays, Jan. 27 – Feb. 3  
*Time* ..... 6:30 p.m. – 8:30 p.m.  
*Tuition* ..... \$36  
*Location* ..... PDC – Computer Lab  
*Instructor* ..... Paula Lambright

## Intermediate Microsoft Word

This class will cover tips and tricks that will allow you to get more out of this useful software. Learn to create personalized mailing labels, a professional resume, and much more. After learning how to utilize the tools that Microsoft Word offers, students will be able to create just about anything! (Ages 14 & up)

*Class Number* ..... 1015-SP15  
*Date* ..... Mondays, Feb. 9 – Feb. 23  
*Time* ..... 6:30 p.m. – 8:30 p.m.  
*Tuition* ..... \$49  
*Location* ..... PDC – Computer Lab  
*Instructor* ..... Paula Lambright

## Essential Basics of Microsoft Excel

In today's professional world, one program that is a necessity is Microsoft Excel. Learn Excel basics such as customizing spreadsheets, formulas, budgets, sorting, filtering and more. In this three-night class, instructor Paula Lambright will guide you as you obtain the valuable skills required in today's competitive job market. (Ages 14 & up)

*Class Number* ..... 1007-SP15  
*Date* ..... Tuesdays, Mar. 17 – Mar. 31 (3 nights)  
*Time* ..... 6:30 p.m. – 8:30 p.m.  
*Tuition* ..... \$49  
*Location* ..... PDC – Computer Lab  
*Instructor* ..... Paula Lambright

## Beyond Basics of Microsoft Excel

In this class, students will advance their skillset to an elevated level that is needed in today's job market. Get an in-depth perspective of customizing charts, linking, learn to utilize a database for mail merge, and more. (Ages 14 & up)

*Class Number* ..... 1012-SP15  
*Date* ..... Tuesdays, Apr. 7 – Apr. 21 (3 nights)  
*Time* ..... 6:30 p.m. – 8:30 p.m.  
*Tuition* ..... \$49  
*Location* ..... PDC – Computer Lab  
*Instructor* ..... Paula Lambright

## Advanced Microsoft Excel

This advanced class will provide insight on more complex elements of Excel such as Pivot-Tables, V-Lookup, and Conditional Formatting. Learn to utilize all that Excel has to offer and you will have the confidence to tackle the most sought after software program in today's business world with ease!

*Class Number* ..... 1030-SP15  
*Date* ..... Tuesdays, Apr. 28 – May 12 (3 nights)  
*Time* ..... 6:30 p.m. – 8:30 p.m.  
*Tuition* ..... \$49  
*Location* ..... PDC – Computer Lab  
*Instructor* ..... Paula Lambright

## Mac: Tips and Tricks for a Beginner

Do you wonder who is telling the truth on the Mac Vs. PC commercials? You be the judge. Learn to navigate your way around an Apple computer. You will learn features that allow for easy navigation and simple use of the tools this computer provides for its user. We will review a top 10 list of the most basic skills you will need to know as a Mac user.

*Class Number* ..... 1130-SP15  
*Date* ..... Monday, Mar. 2  
*Time* ..... 6:30 p.m. – 8:30 p.m.  
*Tuition* ..... \$29  
*Location* ..... PDC – Computer Lab  
*Instructor* ..... Deanna Licatovich

## So, You Bought an iPad for Your Child... Now What?

iPads are being integrated in school systems, out at restaurants, and in our homes. This class targets the use of iPads by the student and parent. What are the "best practices" for these devices? We will discuss statistics, security, and raising a responsible iPad user.

*Class Number* ..... 1013-SP15  
*Date* ..... Monday, Mar. 23  
*Time* ..... 6:30 p.m. – 8:30 p.m.  
*Tuition* ..... \$29  
*Location* ..... PDC – Room 215  
*Instructor* ..... Deanna Licatovich

## Learn to Use Google Apps

Come discover the collaborative world of Google Apps. Did you know these apps include free, online software to collaborate with friends, family, and co-workers? While utilizing the basics of documents, spreadsheets, presentations, calendars, websites, and more, we will collaborate and learn the tools Google provides to any user.

*Class Number* ..... 1137-SP15  
*Date* ..... Mondays, April 13 – April 27 (3 nights)  
*Time* ..... 6:30 p.m. – 8:30 p.m.  
*Tuition* ..... \$29  
*Location* ..... PDC – Computer Lab  
*Instructor* ..... Deanna Licatovich

# WE'VE GOT THE BEAT

## Beginning Guitar I

Have you always wanted to play guitar? This class was designed with the beginner in mind. Students will learn how to hold the guitar and the pick. They will also learn the names and parts of the guitar, basic chords, and timing. With the help of instructor Brent Bassham, each student will learn to play actual songs in this low-pressure class. Each student will need his or her own guitar, either acoustic or electric (including amp and cord), a medium-style pick and a capo (a device used on the neck of a stringed, fretted instrument to raise the key/pitch). (Ages 14 & up) (6 weeks)

*Class Number* . . . . . 5001-SP15  
*Date* . . . . . Mon., Jan. 26 – Mar. 2  
*Time* . . . . . 7:30 p.m. – 8:30 p.m.  
*Tuition* . . . . . \$62  
*Location* . . . . . Poteet – Orchestra Rm  
*Instructor* . . . . . Brent Bassham

## Beginning Guitar II

After completion of Beginning Guitar I, students will continue learning to play the guitar with more comfort and ease. New and different styles of playing will be introduced, ranging from blues, country, and even pop. Instructor Brent Bassham will teach advanced chords and strumming styles to broaden each student's spectrum of skill. Each student will need his or her own guitar, either acoustic or electric (including amp and cord), a medium-style pick and a capo (a device used on the neck of a stringed, fretted instrument to raise the key/pitch). (Ages 14 & up) (6 weeks)

*Class Number* . . . . . 5060-SP15  
*Date* . . . . . Mon., Mar. 23 – Apr. 27  
*Time* . . . . . 7:30 p.m. – 8:30 p.m.  
*Tuition* . . . . . \$62  
*Location* . . . . . Poteet – Orchestra Rm  
*Instructor* . . . . . Brent Bassham

## Line Dancing

Line dancing to any genre of music is an excellent way to get everyone out on the dance floor. Line dancing is often seen at wedding receptions or other large gatherings. Examples include "Cupid Shuffle", "Electric Slide", "Blurred Lines", and many more! Experience an entertaining workout with friends while learning all the popular line dances of today. (Ages 14 & up)

*Class Number* . . . . . 4706-SP15  
*Date* . . . . . Mondays, Jan. 26 – Feb. 23 (6 weeks)  
*Time* . . . . . 6:30 p.m. – 7:30 p.m.  
*Tuition* . . . . . \$49  
*Location* . . . . . Kimball Elementary - Cafeteria  
*Instructor* . . . . . Natasha Freeman

# campGladiator

We believe you are meant to run, jump, crawl, sweat, compete and believe! Camp Gladiator reignites the flame that already burns inside of you that is dimmed from years of neglect, but is still burning. Unleash the fire, join the movement – become a Gladiator!

Plans start as low as \$69 a month.  
 View packages and register online at  
[www.campgladiator.com](http://www.campgladiator.com)



Florence Black Elementary . . . . . Mondays, Wednesdays; 5:15 a.m.  
 Kimbrough Middle School . . . . . Tuesdays, Thursdays; 5:30 a.m.  
 DeBusk Park/Kid Quest . . . . . Mondays, Wednesdays, Thursdays; 8:30 a.m.  
 Tosch Elementary . . . . . Mondays, Wednesdays; 6:00 p.m.  
 McKenzie Elementary . . . . . Tuesdays, Thursdays; 6:00 p.m.



# ¿NO HABLA ESPAÑOL?

## Conversational Spanish I

Whether your needs are for basic conversation or Spanish as a second language, instructor Ellen Quinn will guide students to develop language skills at a beginner level. Students will participate in various role-playing while learning Spanish in a fun and casual class setting. The required textbook is included with the class fee. (Ages 14 & up)

*Class Number* ..... 3001-SP15  
*Date* ..... Mon. and Wed., Feb. 2 – 25 (4 weeks)  
*Time* ..... 6:30 – 8:30 p.m.  
*Tuition* ..... \$82 (includes textbook)  
*Location* ..... PDC – Room 208  
*Instructor* ..... Ellen Quinn

## Conversational Spanish II

Students continue their studies of the Spanish language. While mastering verbs, tenses, and sentence structure, each student will have a better understanding of the Spanish language and the capability to speak Spanish in a casual setting. (Students will use the same textbook required for Beginning Conversational Spanish I.) (Ages 14 & up)

*Class Number* ..... 3002-SP15  
*Date* ..... Mon. and Wed., Mar. 16 – Apr. 8 (4 weeks)  
*Time* ..... 6:30 – 8:30 p.m.  
*Tuition* ..... \$65 (includes textbook) OR \$50 promo\*  
*Location* ..... Potet – Room 216  
*Instructor* ..... Ellen Quinn

**\*Conversational Spanish II only \$50 for returning Spanish I students!**

# F.Y.I.

## Do I Need a Will or Living Trust?

Do you know or understand what happens to your estate without having a will or living trust in force? Even if you are a person of modest means, it's only natural that you want some control over what happens to your assets. Join Attorney Gary Grimes for this informative, interactive class and learn about different strategies to ensure your assets are in order. **Bring your spouse or a friend at no additional charge. This class offers valuable information for all ages!**

*Class Number* ..... 1505-SP15  
*Date* ..... Tuesday, Apr. 7  
*Time* ..... 7 p.m. – 8:30 p.m.  
*Tuition* ..... \$19/Bring a guest for free.  
*Location* ..... PDC – Room 215  
*Instructor* ..... Attorney Gary Grimes

## Clean Eating

There is more to “clean eating” than just switching to whole grains and skipping the free donuts. Clean eating is a lifestyle that maintains a healthy physique by fueling our body with high-quality foods. Learn how to enhance your overall wellbeing through clean eating. Those who choose a clean eating lifestyle benefit from sustainable energy, high quality sleep, physical strength, and mental sharpness. Join us and learn the proper steps to a clean eating lifestyle change. This class is beneficial for all ages.

*Class Number* ..... 2548-SP15  
*Date* ..... Tuesday, Feb. 3  
*Time* ..... 6 p.m. – 8 p.m.  
*Tuition* ..... \$22/Bring a family member for free.  
*Location* ..... PDC – Room 215  
*Instructor* ..... Marjorie Anet

## CPR - Child and Adult (Heartsavers)

Would you know what to do in an emergency situation? Understanding how to perform CPR is a necessity for everyone. Participants will learn emergency techniques for cardiopulmonary resuscitation of children and adults. Learn how to use an automatic external defibrillator (AED). The American Heart Association approves this course and an American Heart Association credentialed completion card will be issued. Participants must be able to satisfactorily complete all physical aspects of class, including kneeling and utilizing upper body for chest compressions.

*Class Number* ..... 3520-SP15  
*Date* ..... Wednesday, March 25  
*Time* ..... 6 p.m. – 9:30 p.m.  
*Tuition* ..... \$44  
*Location* ..... PDC – Room 213  
*Instructor* ..... Angela Ballard, R.N.

## Work at Home as a Medical Transcriptionist

Explore opportunities to start a new career in which you can choose your own hours, have a business at home, find employment easily and make an excellent income. You will discover a step-by-step guide learning what medical transcription is, including the many options open, such as working as a medical scribe, marketing your new business, obtaining clients, pricing, choosing equipment, and using appropriate software. Whether you are just exploring possibilities or are already experienced, this class is for you!

*Class Number* ..... 2534-SP15  
*Date* ..... Wednesday, Feb. 25  
*Time* ..... 6 p.m. – 9 p.m.  
*Tuition* ..... \$40 (workbook: \$20)  
*Location* ..... PDC – Room 215  
*Instructor* ..... Deborah Burns

## Senior Care: Information for Caregivers and Family

Being a caregiver is never easy. No two situations are alike. Join veteran caregiver Marilyn Herrin as she shares what has worked for her with the challenges of caregiving. In this class, you will learn about community resources and websites that can assist in caregiving efforts including long-term nursing facility, rehab, and at-home care. Participants will learn strategies to approach the search for alternate living quarters, transportation options, long distance caregiving and much more. In addition, there will be an information table targeting the caregiver as well as a table of devices that the instructor has found useful. Please feel free to bring a family member at no additional charge.

*Class Number* .....2557-SP15A  
*Date* .....Tuesday, Feb. 10  
*Time* .....6:30 p.m. – 8:30 p.m.  
*Tuition* ..... \$19/Bring a family member for free!  
*Location* ..... PDC - Room 213  
*Instructor* ..... Marilyn Herrin

*Class Number* .....2557-SP15B  
*Date* .....Tuesday, Mar. 24  
*Time* .....6:30 p.m. – 8:30 p.m.  
*Tuition* ..... \$19/Bring a family member for free!  
*Location* ..... PDC - Room 213  
*Instructor* ..... Marilyn Herrin

# MAKE A DIFFERENCE: MOTIVATE ENCOURAGE INSPIRE

## Try and Make Me!

Where and why did this defiance start? Why doesn't praise work? If you have ever asked yourself these questions, this class is for you! Dr. Ray Levy has documented all the answers in his book, *Try and Make Me!*. Join this group session that will focus on discussion of Dr. Levy's book in an interactive and entertaining manner. This class will be helpful to parents, child caregivers, daycare workers, and teachers. (Books may be purchased for an additional \$8.)

*Class Number* .....4580-SP15  
*Date* .....Tuesday, Feb. 24  
*Time* .....6:30 p.m. – 8:30 p.m.  
*Tuition* ..... \$22 (Guest only \$10)  
*Location* .....PDC – Room 215  
*Instructor* ..... Kelly Smith

## Parenting with Love and Logic

"I don't understand it. The techniques my parents used so effectively just don't seem to work today." Does this sound familiar? None of us received a training manual when we brought our babies home from the hospital. Why the terms "love" and "logic"? Join us for this helpful and entertaining class to find out. You will learn how to teach your children to think, to decide, and to live with their decisions. You will also pick up skills useful to prepare your children to become responsible individuals by using love, empathy, and understanding. This class will be helpful to parents, child caregivers, daycare staff members, and especially teachers.

*Class Number* .....4550-SP15  
*Date* .....Monday, Mar. 16  
*Time* .....6:30 p.m. – 8:30 p.m.  
*Tuition* .....\$22 (Guest only \$10)  
*Location* ..... PDC – Room 215  
*Instructor* ..... Kelly Smith

## Pulling the Plug on Power Struggles

Are you exhausted from repeating yourself over and over? Are you frustrated in dealing with your child's defiance? If the answer to these questions is a resounding "YES," please join us for this groundbreaking class. You will learn the warning signs of a power struggle and how to avoid them. Learn the importance of setting limits and expectations. This class will be helpful to parents, child caregivers, daycare staff members, and especially teachers.

*Class Number* .....4567-SP15  
*Date* .....Monday, Apr. 20  
*Time* .....6:30 p.m. – 8:30 p.m.  
*Tuition* .....\$22 (Bring a guest for only \$10)  
*Location* ..... PDC – Room 215  
*Instructor* ..... Kelly Smith

## Mesquite ADHD Support Group

Do you or a family member suffer from ADD or ADHD? Its good to know you are not alone and can talk to people in a similar situation. The Mesquite ADHD Support Group is a member of Attention Deficit Disorder Association-Southern Region. Together, we are a strength-based group that provides a relaxed, casual, learning environment offering support and friendship while teaching important skills.

*Class Number* .....4554-SP15  
*Date* .....Tuesdays, Feb. 10 & Apr. 14  
*Time* .....7 p.m. – 8 p.m.  
*Tuition* ..... Free  
*Location* ..... PDC – Room 215  
*Instructor* ..... Kelly Smith

**These classes will be helpful to parents, child caregivers, daycare workers, and teachers.**

# ONLINE CLASSES

ED2GO • GATLIN EDUCATION SERVICES • DRIVER'S ED



Online courses are a convenient and easy way to get the information you need on your schedule! MISD Community Education is proud to offer online classes in partnership with Ed2Go and GES.

# ed2go

These instructor-facilitated online classes are informative, fun, convenient, and highly interactive. All classes run for six weeks (with a ten-day grace period at the end) and are available anytime. Classes are project-oriented and include lessons, quizzes, hands-on assignments, supplementary links, monitored lively discussion areas and more. Choose from more than 300 individual classes in more than 25 categories and more than 100 career certificate programs. With tuition starting at just \$94, you can get started right now!

## ed2go Courses Feature:

- **Expert Instructors**
- **Interactive Discussion Areas**
- **24/7 Learning**
- **6 Weeks, 12 Lessons**
- **Financial Aid Available**
- **New sessions begin monthly**

## GET STARTED:

1. Visit the Online Instruction Center at:  
**[www.ed2go.com/misdcomed](http://www.ed2go.com/misdcomed)**
2. Select a course from the catalog and click **Enroll Now**. Follow the instructions to enroll and pay for your course. Enter your email address and choose a password that will grant you access to the Classroom.
3. When your course starts, return to the Online Instruction Center and click **My Classroom**. To begin your studies, log in with the email address and the password you selected during enrollment.

## Topics Include:

Accounting and Finance  
Business  
College Preparation  
Computer Programming  
Digital Photography  
EMS and Firefighter  
Event Planning  
Food Nutrition  
Graphic Design  
Health Care and Medical  
Law and Legal  
Marketing  
Microsoft Office  
QuickBooks  
Photoshop  
Professional Development  
Real Estate  
Sign Language  
Social Networking  
Spanish  
Stress Management  
Teaching and Education  
Web Design  
Writing and Publishing

Explore the course catalog at  
**[www.ed2go.com/misdcomed](http://www.ed2go.com/misdcomed)**



# DRIVER'S EDUCATION

## Parent Taught – Teen Driver's Education



- DPS Approved course for first-time driver's license
- For students ages of 15-17 years old
- Available online from any internet connection
- Learn at home – on your schedule
- Parents assist and save money

ONLY  
**\$149.95**

For more information,  
please visit our website at  
[www.communityedclasses.org](http://www.communityedclasses.org).

## Adult Driver's Education



- Required for adults 18 and older
- Online, self-paced, multimedia course
- Final exam online
- Certificate available overnight
- Bonus: in-car training video

ONLY  
**\$44.95**

In partnership with the **Mesquite ISD Education Foundation, Inc.**  
*Powered by Virtual Drive*

# SPRING FLING SELL-A-THON

COMING

**SATURDAY, APRIL 11, 2015**

LOCATED IN THE PARKING LOT OF POTEET HIGH SCHOOL

## SHOP OR SELL! DON'T MISS OUT!

WATCH THE MISD COMMUNITY EDUCATION WEBSITE AND LISTEN TO KEOM 88.5 FM FOR INFORMATION. IF YOU WOULD LIKE VENDOR INFORMATION, PLEASE EMAIL [WDOTY@MESQUITEISD.ORG](mailto:WDOTY@MESQUITEISD.ORG). (WEATHER MAKE-UP DAY IS APR. 25, 2015.)



# MINOR-IN-POSSESSION

MISD Community Ed and Alcohol Substance Abuse Program (ASAP) offer Minor-In-Possession Alcohol Awareness Classes.

## ALCOHOL AWARENESS CLASS

Minors cited for alcohol-related offenses such as Minor in Possession (MIP), DUI, Consumption, and Attempted Purchase may be ordered to an alcohol awareness class. The class is six hours (two three-hour sessions) in length.

Classes are held at the Mesquite Academy Annex on a Wednesday and Thursday evening. **Students must attend class both evenings to receive their certificate.**

## 2015 REGISTRATION AND CLASS DATES

Registration Date	Class Date
January 6 . . . . .	January 7-8
February 3 . . . . .	February 4-5
March 3 . . . . .	March 4-5
March 31 . . . . .	April 1-2
May 5 . . . . .	May 6-7
June 2 . . . . .	June 3-4

*Class Time* . . . . . 6 – 9 p.m. Wednesday **and** Thursday  
*Class Location* . . . . . Mesquite Academy Annex (2700 Motley Drive, Mesquite 75150 ) Room 105

## REGISTRATION

Students under 16 years of age must be accompanied by a parent or legal guardian who **must be present** during registration. Students 16 or older may register without a parent or legal guardian present. Students will need their Driver's License and Social Security number. The cost is \$60 and payment is due at the time of registration. Registration is between 3 - 4:30 p.m. on the listed registration dates and takes place in the MISD Curriculum Building (across from Mesquite High School).

*Registration Fee* . . . . . \$60  
*Registration Time* . . . . . 3 - 4:30 p.m.  
*Registration Location* . . . . . MISD Curriculum Building (405 East Davis Street, Mesquite 75149)

# See what you've been missing!

It's easy to stay informed about upcoming MISD Community Education classes! Like us on **Facebook**, or visit our **website** to find out about special discounts.



**Get started at [www.CommunityEdClasses.org](http://www.CommunityEdClasses.org)**



# CLASSES FOR KIDS

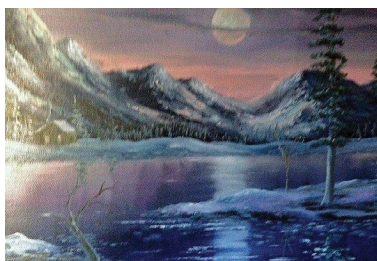
Lifelong learning starts at a very young age! MISD Community Ed offers classes geared to enhance academic skills and provide opportunities to grow and develop.

*"Creativity is contagious, pass it on!"*  
~Albert Einstein

# YOU CAN PAINT

## You Can Paint

Master artist Robert Garden uses his precise, step-by-step method of teaching in this unique painting class. You will learn basic fundamentals with timesaving techniques, the science of color, brush loading, and perspective that will enable you to complete a painting you will be proud to frame and display. All supplies are provided (professional-grade paint, various brushes, an arranged palette, canvas, medium, and easel). All you have to do is bring paper towels and wear old clothes! No experience necessary. (Ages 7-12)



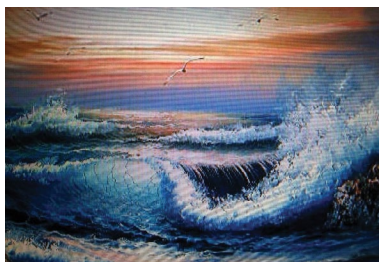
### Moonlight in the Rockies (on black canvas)

*Class Number* . . . . . 6227-SP15  
*Date* . . . . . Saturday, Jan. 17  
*Time* . . . . . 1 p.m. – 2:30 p.m.  
*Tuition* . . . . . \$29  
*Location* . . . . . Poteet – Room 114  
*Instructor* . . . . . Robert Garden



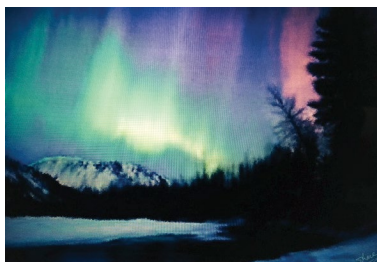
### Italian Villa by the Sea (with pallet knife)

*Class Number* . . . . . 6223-SP15  
*Date* . . . . . Saturday, Feb. 21  
*Time* . . . . . 1 p.m. – 2:30 p.m.  
*Tuition* . . . . . \$29  
*Location* . . . . . Poteet – Room 114  
*Instructor* . . . . . Robert Garden



### Crashing Waves

*Class Number* . . . . . 6224-SP15  
*Date* . . . . . Saturday, March 21  
*Time* . . . . . 1 p.m. – 2:30 p.m.  
*Tuition* . . . . . \$29  
*Location* . . . . . Poteet – Room 114  
*Instructor* . . . . . Robert Garden



### Northern Lights (on black canvas)

*Class Number* . . . . . 6225-SP15  
*Date* . . . . . Saturday, April 18  
*Time* . . . . . 1 p.m. – 2:30 p.m.  
*Tuition* . . . . . \$29  
*Location* . . . . . Poteet – Room 114  
*Instructor* . . . . . Robert Garden



### Hummingbird at a Hibiscus (watercolor)

*Class Number* . . . . . 6226-SP15  
*Date* . . . . . Saturday, May 16  
*Time* . . . . . 1 p.m. – 2:30 p.m.  
*Tuition* . . . . . \$29  
*Location* . . . . . Poteet – Room 114  
*Instructor* . . . . . Robert Garden

### Basketball

Do you need to sharpen your skills on the court? Join Coach Quinn for this fun, informative class. You will participate in drills and scrimmages while learning the essential skills of basketball: dribbling, passing, and rebounding. Improve your free throw while participating in friendly competition. Come dressed for active play, wear proper footwear, and be sure to bring water. (5th – 8th Grade Boys & Girls)

Class Number . . . . . 6091-SP15  
 Date . . . . . Wednesdays, Feb. 4 – Mar. 4 (5 weeks)  
 Time . . . . . 6 p.m. – 7:30 p.m.  
 Tuition . . . . . \$44  
 Location . . . . . Terry Middle School - Gym  
 Instructor . . . . . Coach Kara Quinn

### Volleyball

Sharpen your skills and get ahead of the game! Join Coach Quinn for this fun, informative class. Participants will learn new skills through drills and scrimmages. Improve coordination and conditioning while learning fundamentals such as serving, sending the ball back over the net, rotating, and the rules of the game. Come dressed for active play, wear proper footwear, and be sure to bring water. (5th – 8th Grade Boys & Girls)

Class Number . . . . . 6090-SP15  
 Date . . . . . Wednesdays, Apr. 8 – May 6 (5 weeks)  
 Time . . . . . 6 p.m. – 7:30 p.m.  
 Tuition . . . . . \$44  
 Location . . . . . Terry Middle School - Gym  
 Instructor . . . . . Coach Kara Quinn

# GOT SKILLS?

**Classes Fill Quickly So REGISTER EARLY**

For many classes, instructors need to know the total enrollment in time to order books or other materials. If there are not enough registrations by a certain date the class could be cancelled. Make sure the class you are interested in remains available by registering today! **See Class Registration Form on Page 23.**

# SUMMER CAMP 2015



**It is going to be a BIG Summer!**

**Beginning Guitar I**

This class was formed with the beginner in mind. Students will learn how to hold the guitar and pick. They will learn the names and parts of the guitar, basic chords, and timing. With the help of instructor Brent Bassham, each student will learn to play actual songs in this low-pressure class. Each student will need his or her own guitar, either acoustic or electric (including amp and cord), a medium-style pick and a capo (a device used on the neck of a stringed, fretted instrument to raise the key/pitch). (Ages 9 – 13)

*Class Number* .....6001-SP15  
*Date* ..... Mondays, Jan. 26 – March 2 (6 weeks)  
*Time* ..... 6:30 p.m. – 7:30 p.m.  
*Tuition* ..... \$62  
*Location* ..... Poteet – Orchestra Room  
*Instructor* ..... Brent Bassham

**Beginning Guitar II**

After completion of Beginning Guitar I, students will continue learning to play the guitar with more comfort and ease. New and different styles of playing will be introduced, ranging from blues, country, and even pop. Instructor Brent Bassham will teach advanced chords and strumming styles to broaden each student’s spectrum of skill. Each student will need his or her own guitar, either acoustic or electric (including amp and cord), a medium-style pick and a capo (a device used on the neck of a stringed, fretted instrument to raise the key/pitch). (Ages 9 – 13)

*Class Number* .....6060-SP15  
*Date* ..... Mondays, Mar. 23 – Apr. 27 (6 weeks)  
*Time* ..... 6:30 p.m. – 7:30 p.m.  
*Location* ..... Poteet – Orchestra Room  
*Tuition* ..... \$62  
*Instructor* ..... Brent Bassham

WE’VE  
 GOT  
 THE  
 BEAT

**Zentangle**

**“Zentangle has become an international phenomenon that now has applications in stress reduction, education, therapy, and even motivational training.”**

– Cathy Malchiodi, PhD, LPCC, LPAT; *Psychology Today Magazine*

What is Zentangle? Zentangle is a method of meditative drawing. It is easy-to-learn, relaxing, and a fun way to create beautiful images by drawing structured patterns. It increases focus, creativity, and provides artistic satisfaction along with an increased sense of personal well-being. Strengthen your brain and join instructor Jaci Mouser as she guides you through the creative process of Zentangle. You do not have to be an artist or have artistic talent. Almost anyone can Zentangle! (Ages 10 & up)

*Class Number* ..... 2166-SP15A  
*Date* ..... Tuesday, March 3  
*Time* ..... 6 p.m. – 8 p.m.  
*Tuition* ..... \$18  
*Location* ..... PDC – Room 215  
*Instructor* ..... Jaci Mouser

*Class Number* ..... 2166-SP15B  
*Date* ..... Tuesday, May 5  
*Time* ..... 6 p.m. – 8 p.m.  
*Tuition* ..... \$18  
*Location* ..... PDC – Room 215  
*Instructor* ..... Jaci Mouser







# YOUTH PROGRAMS

YOUNG REMBRANDTS • DRAMA KIDS • DYS • FRIDAY NITE LIVE!

In addition to offering excellent classroom and online classes, we are pleased to partner with these sponsored youth programs!



## Elementary Composite Classes

In Composite Class everyone is a star! Students work together on structured improvisations, group activities, speech, creative movement activities, theater games, and more. We provide a fun and fast paced environment that teaches valuable academic and social skills, such as teamwork, leadership, and public speaking. Class concludes with a wonderful performance on stage.

### **Black Elementary Drama Kids Composite Class: Join Our Pirate Crew for High Seas Adventure!**

For many a young pirate joining the Great Captain Joe's Expedition could only be a dream. The promise of a glamorous life of the high seas attracts many to join Captain Joe. The reality on board is quite different, though. But is it too late? Who can stop this unstoppable and clever tyrant?

*Ages* . . . . . 6-12  
*Date* . . . . . Tuesdays, starting Jan. 6 (no class Mar. 10)  
*Time* . . . . . 6:15 p.m. – 7:15 p.m.  
*Location* . . . . . Black Elementary – Cafeteria  
*Spring Performance* . . . . . Off Campus, date TBA

### **Moss Elementary Drama Kids Composite Class: Join Us Under the Big Top for a Mystery**

Once a fantastic circus, The Big Top is now a big flop, frustrating its talented and hard-working performers. Reminiscing on their long-gone "sold out" nights, these stars decide to change the course of their fate and fight together to bring the kids back to the circus...but not without solving a Big Mystery first. Help solve the mystery and restore The Big Top to fame!

*Ages* . . . . . 6-11  
*Date* . . . . . Mondays, starting Jan. 5 (no class Mar. 9)  
*Time* . . . . . 6 – 7 p.m.  
*Location* . . . . . Moss Elementary – Cafeteria  
*Spring Performance* . . . . . Off Campus, date TBA

## DKI Acting Academy for TEENS

The Acting Academy class is a very comprehensive program that covers spontaneous improvisation with specific directives, mini-scripts, character analysis, dialogues, theatre games, radio plays, monologues, and structured scenes. Year-end scripted production performed for public audience.

### **Moss Elementary DKI Acting Academy for TEENS: Join Us for The Triumph of Trevor Truelove**

This small European village is in an uproar! Will the evil Lord Villiers steal our heroine Lucy Goodheart, from the arms of her beloved Trevor Truelove? Or will good overcome evil in this melodrama packed with treachery, intrigue, and double-dealing? Join our passionate cast of characters to find out.  
*Ages* . . . . . 12-18  
*Date* . . . . . Mondays, starting January 13 (no class Mar. 9)  
*Time* . . . . . 7 – 8 p.m.  
*Location* . . . . . Moss Elementary – Cafeteria  
*Spring Performance* . . . . . Off Campus, date TBA

## Kinder Kids

Kinder Kids introduces the long-term benefits of dramatic arts participation to children attending Pre-K or Kindergarten. Each Kinder Kid is involved in creative drama activities that develop speaking skills, build confidence, and enhance early social skills and creative learning. Our instructors make sure all students feel comfortable and recognized so they will stretch and grow in a positive environment. New scenes and activities are held in each class. Don't miss the fun!

### **Black Elementary Kinder Kids**

*Ages* . . . . . Pre-K – 1st  
*Date* . . . . . Tuesdays, January 6 - May 26 (no class Mar. 10)  
*Time* . . . . . 5:30 p.m. – 6:15 p.m.  
*Location* . . . . . Black Elementary

**Register at [www.dramakids.com/tx3](http://www.dramakids.com/tx3) or call 1-972-363-2369.**

**Cost of the program \$58 per month with \$30 annual registration fee (10% discount for siblings).**

#### LOCATIONS:

Black Elementary, 328 East Newsom Road, Mesquite, TX 75149  
Moss Elementary, 1208 New Market, Mesquite, TX 75149

# DYS

## DIVERSIFIED YOUTH SERVICES

**Register on-site at time of class.**

Call **DYS** at 972-578-7555 for more information.

### Texas Dance and Cheer at Kimball

Date . . . . . Mondays  
 Time, Ages 4-7 . . . . . 6 - 7 p.m.  
 Time, Ages 8 and up . . . . . 7 - 8 p.m.  
 Tuition . . . . . \$10/week; \$20 one-time registration  
 Location . . . . . Kimball Elementary – Gym

### Texas Dance and Cheer at Moss

Date . . . . . Thursdays  
 Time, Ages 4-7 . . . . . 6 - 7 p.m.  
 Time, Ages 8 and up . . . . . 7 - 8 p.m.  
 Tuition . . . . . \$10/week; \$20 one-time registration  
 Location . . . . . Moss Elementary – Gym

### Self-Defense/Anti-Kidnapping at Kimball

Date . . . . . Thursdays  
 Time, Ages 4-7 . . . . . 6 - 7 p.m.  
 Time, Ages 8 and up . . . . . 7 - 8 p.m.  
 Tuition . . . . . \$10/week; \$20 one-time registration  
 Location . . . . . Kimball Elementary – Gym

### Self-Defense/Anti-Kidnapping at Moss

Date . . . . . Mondays  
 Time, Ages 4-7 . . . . . 6 - 7 p.m.  
 Time, Ages 8 and up . . . . . 7 - 8 p.m.  
 Tuition . . . . . \$10/week; \$20 one-time registration  
 Location . . . . . Moss Elementary – Gym

### Distinct Dance of Texas at Kimball

Date . . . . . Wednesdays  
 Time, Ages 4-7 . . . . . 6 - 7 p.m.  
 Time, Ages 8 and up . . . . . 7 - 8 p.m.  
 Tuition . . . . . \$10/week; \$20 one-time registration  
 Location . . . . . Kimball Elementary – Gym

### Distinct Dance of Texas at Moss

Date . . . . . Wednesdays  
 Time, Ages 4-7 . . . . . 6 - 7 p.m.  
 Time, Ages 8 and up . . . . . 7 - 8 p.m.  
 Tuition . . . . . \$10/week; \$20 one-time registration  
 Location . . . . . Moss Elementary – Gym



# INVEST \$15 IN SCHOLAR DOLLARS

BY MARCH 1

## FOR JUST \$15, YOU CAN INVEST IN AN Misd STUDENT AND IN YOUR FUTURE.

A donation of \$15 to the Mesquite ISD Education Foundation will be earmarked to pay for an Advanced Placement (AP) exam for an economically disadvantaged student. Students who make a qualifying score on an AP exam can receive college credits for their work in the advanced high school class.

Visit [WWW.MESQUITEFOUNDATION.ORG](http://WWW.MESQUITEFOUNDATION.ORG) and click **Scholar Dollars** to invest in the future!



## Young Rembrandts

Calling all artists! Young Rembrandts is a program for any child with artistic interests as well as those who need further fine motor skill development. This program teaches fundamental drawing skills, art techniques and vocabulary. Participating students will expand their creativity, imagination, confidence, attention to detail, time on task, visual/spatial organization, and fine motor skills.

Young Rembrandts curriculum covers a wide variety of child-friendly subject matter to introduce new concepts, ideas, and techniques with an art history lesson each month. New lessons every session and all supplies provided.

**Registration** is done on-site or online at [www.youngrembrandts.com/north-dallas](http://www.youngrembrandts.com/north-dallas).

For additional information, please call **(214) 427-7050** or email [tray.moore@youngrembrandts.com](mailto:tray.moore@youngrembrandts.com).



### Young Rembrandts Winter

*Date .* Wed., Jan. 28 - March 4  
*Time . . . . .* 3:15 - 4:15 p.m.  
*Location . . . . .* Beasley Elementary  
 919 Green Canyon Dr., 75150  
*Tuition . . .* \$75 (includes all supplies)

### Young Rembrandts Spring

*Date . .* Wednesdays, April 1 - May 6  
*Time . . . . .* 3:15 - 4:15 p.m.  
*Location . . . . .* Beasley Elementary  
 919 Green Canyon Drive, 75150  
*Tuition . . .* \$75 (includes all supplies)



**Enjoy 3 1/2 hours  
 of excitement  
 and supervised  
 entertainment  
 for only \$10!**

Presented by Communities for Kidz, Friday Nite Live is a fun and safe youth program for children in grades 1-6, Friday nights from 7:00 -10:30 p.m. Friday Nite Live is hosted by Smith and Austin Elementary Schools. Come enjoy all the activities, such as dodgeball tournaments, basketball, wall ball, as well as Top 40 dance music with a Live DJ! We will have dance contests, hula hoop contests, limbo, and many more cool things to do! Activities and events change from week to week.

### REGISTRATION ON-SITE ONLY!

Information will be distributed through the schools each month - keep watching!  
 Have your birthday party with us! For more information, please call 214-986-4326 or visit our website at [www.FridayNiteLive.com](http://www.FridayNiteLive.com).

### LOCATIONS:

**Austin Elementary** 3020 Poteet Drive, Mesquite 75150  
**Smith Elementary** 2300 Mesquite Valley Road, Mesquite 75149

# REGISTRATION AND POLICY INFORMATION

## Registration

Registration is required. We accept cash, check, money order, MasterCard, and Visa. Please make checks or money orders payable to Mesquite ISD. If you are mailing your payment, please note on the payment itself the name of the person taking the class and the class number. **You do not have to be a Mesquite resident to participate in a class.**

### 5 EASY WAYS TO REGISTER!



#### ONLINE

[www.communityedclasses.org](http://www.communityedclasses.org)



#### BY MAIL

MISD Community Education,  
405 E. Davis Street, Mesquite, Texas 75149



#### BY PHONE

972-88-CLASS (972-882-5277)



#### BY FAX

972-882-7462



#### IN PERSON

MISD Florence Annex, 105 South Florence, Mesquite, 75149

## Tuition and Fees

Tuition is payable in full at time of registration or within five business days of a registration made by phone or fax without a credit card. Additional fees for course supplies and textbooks may vary. Students should be prepared to pay additional fees the first night of class as noted in the course description. In the event that a check written to MISD Community Education is returned unpaid by your bank, CheckSmart Recovery will redeposit your check electronically. Additionally, we may electronically collect a returned check fee of \$30 plus applicable sales tax. The use of a check for payment is your acknowledgment and acceptance of this policy and its terms. You may reach CheckSmart Recovery at (888) 851-6634.

You may reserve space in classes for a \$10 nonrefundable fee which will be applicable to class tuition. The balance will be due and payable on or before the class meets or the first meeting of a multiple-night class.

## Refunds/Cancellations

Classes cancelled by MISD Community Education will result in a full refund payable to you by mail or applied to the credit card used at the time of registration. All refunds are issued in check form, or credit card refund, through MISD. If, after registering, you cancel two business days prior to the first class day, a full refund will be issued. No refund will be given after the first day of class. Our courses require a minimum enrollment in order to be offered and our instructor salaries are based on this minimum amount. If it is necessary to cancel a class, it is important to do so in a timely manner, no less than two business days prior to the class date and time. This ensures an accurate enrollment count.

## Confirmations

Confirmations of mailed-in or faxed registrations will

not be sent unless you provide an email address. You may assume you are registered for a course unless you are notified that the class is cancelled or already filled when your registration is received. If a class is filled, your name will be placed on a waiting list. As openings occur, names will be added to the class according to placement on the waiting list. A courtesy reminder call may be attempted prior to the first day of class.

## Inclement Weather

When Mesquite ISD is forced to cancel the regular school day due to inclement weather, MISD Community Education classes will also be cancelled. Tune in to KEOM 88.5 FM for weather reports and school closings.

## Weapons/Smoking

It is against state law to possess weapons on school property. Absolutely no weapons of any kind can be brought on any school property. Smoking is not permitted on ANY school property.

**Holidays**

MISD Community Education will follow the Mesquite ISD holiday schedule unless otherwise noted by the instructor.

**Lost Items/Personal Possessions**

MISD Community Education will not be responsible for items or personal possessions left behind in classrooms or lost while attending classes and/or camps.

**Photographs/Videotaping**

Occasionally, MISD personnel may photograph and/or videotape classes and camps. This material may be used on our website, publications, and/or local media outlets without any obligation to provide compensation to those photographed. By registering for any of our camps or classes, you give permission for you and/or your child(ren) to be photographed and/or videotaped. If you do not wish for this to occur, please inform us at the time of registration and a release form stating this will be provided to you for your signature.

**Disclaimer**

Every effort has been made to make this



publication accurate at the time of publication. However, all policies, procedures, tuition fees, book fees, enrollment numbers, locations, and curriculum are subject to change and classes may be cancelled at any time by MISD Community Education.

**If you have any questions about these or any other policies and procedures of MISD Community Education, please contact us at 972-882-5277.**

**CLASS LOCATION ADDRESSES**

All classes will be held at one of the following locations. Maps can be found on our website.

<b>Facility</b>	<b>Address</b>
Austin Elementary . . . . .	3020 Poteet Drive, 75150
Beasley Elementary . . . . .	919 Green Canyon Drive, 75150
Black Elementary . . . . .	328 East Newsom Road, 75149
Hobby Lobby . . . . .	2302 N. Galloway Avenue, 75150
Kimball Elementary . . . . .	4010 Coryell Way, 75150
Mesquite Academy Annex . . . . .	2700 Motley Drive, 75150
MISD Community Education Office . . . . .	105 South Florence Street, 75149
Moss Elementary . . . . .	1208 New Market Road, 75149
Poteet High School . . . . .	3300 Poteet Drive, 75150
Professional Development Center (PDC) . . . . .	2600 Motley Drive, 75150
Smith Elementary . . . . .	2300 Mesquite Valley, 75149
Terry Middle School . . . . .	2351 Edwards Church, 75181
Watt a Find . . . . .	910 W. Kearney, Suite D, 75149

# HOW TO REGISTER FOR A CLASS

Registration is easy! Choose from one of these methods:



**ONLINE:** Register online at [www.communityedclasses.org](http://www.communityedclasses.org).



**BY MAIL:** Mail the **Class Registration Form** on the opposite page along with payment to: MISD Community Education, 405 East Davis Street, Mesquite, TX 75149.



**BY PHONE:** Call us at 972-88-CLASS (972-882-5277) to register over the phone.



**BY FAX:** Fax the **Class Registration Form** on the opposite page to 972-882-7462.



**IN PERSON:** Come by the Community Education main office in the MISD Florence Annex (at 105 South Florence Street, Mesquite, Texas 75149) to register in person. Look for the cream-colored stone house on corner of South Florence and Main, across the railroad tracks from the Mesquite High School baseball field.

**REGISTER EARLY**  
**TO ENSURE YOUR CLASS IS STILL AVAILABLE**  
 Classes fill quickly, so don't delay in registering for the classes you want!

## MISD Community Education

Mesquite Independent School District

**PHYSICAL ADDRESS:**

105 South Florence Street  
 Mesquite, Texas 75149

**MAILING ADDRESS:**

405 East Davis Street  
 Mesquite, Texas 75149

PHONE: 972-88-CLASS (972-882-5277)

FAX: 972-882-7462

[www.communityedclasses.org](http://www.communityedclasses.org)

**OFFICE HOURS:**

Monday - Thursday: 8 a.m. - 4:30 p.m.

Friday: 8 a.m. - 4 p.m.



**Wendee Doty**

COMMUNITY EDUCATION  
 PROGRAM SPECIALIST  
[wdoty@mesquiteisd.org](mailto:wdoty@mesquiteisd.org)



**Jaci Mouser**

COMMUNITY EDUCATION  
 MARKETING SPECIALIST  
[jmouser@mesquiteisd.org](mailto:jmouser@mesquiteisd.org)

### 2014-2015 ADVISORY COUNCIL

Becky Giles, *President*

Pat Johnson, *Vice President*

Cecelia Stein, *Secretary*

Donna Adams

Wendee Doty

Barbara Dunn

Lisa Fite

Joe Giles

Brenda Griffin

Mel Gonzales

Vicki Helms

Ed Hudson

Denise Kutch, Ed.D.

Jaci Mouser

Bob Murdock, Ph.D.

Linda Rhodes

Sandra Thorp

Terry Tosch

**The MISD Community Education staff would like to express a special "Thank You!" to all of our instructors for their hard work and dedication! We would also like to acknowledge our appreciation for the campuses and businesses who host our classes as well as the support of the administrators of the Mesquite Independent School District. We couldn't do it without you!**





MISD Community Education  
 Mesquite Independent School District  
 405 East Davis Street  
 Mesquite, Texas 75149

Non-Profit Org.  
 U.S. Postage  
**PAID**  
 Mesquite, TX 75149  
 Permit No. 147

**SPRING  
 FLING  
 SELL-A-THON**

COMING  
**SATURDAY,  
 APRIL 11, 2015**

LOCATED IN THE PARKING LOT OF  
 POTEET HIGH SCHOOL

**SHOP OR SELL!**

**DON'T MISS OUT!**

**WATCH THE MISD COMMUNITY  
 EDUCATION WEBSITE AND  
 LISTEN TO KEOM 88.5 FM FOR  
 INFORMATION. IF YOU WOULD  
 LIKE VENDOR INFORMATION,  
 PLEASE EMAIL WDOTY@  
 MESQUITEISD.ORG. (WEATHER  
 MAKE-UP DAY IS APR. 25, 2015.)**

# SNEAK PEEK OF WHAT'S INSIDE:

## Zentangle

Strengthen your brain! Increase focus and creativity as you learn to practice mindful meditation through Zentangle. . . . . Page 4

## Chalk Painting Workshop

Transform trash to treasure in this one-day workshop! Learn to repurpose like a pro, make your own chalk paint, and discover a variety of finishing techniques. . . . . Page 5

## So, You Bought an iPad for Your Child... Now What?

Discover the best practices for this versatile device. Learn about important statistics, security, and raising a responsible iPad user. . . . . Page 7

## Learn to Use Google Apps

Did you know Google offers free apps that include online software to collaborate with friends, family, and co-workers? Learn to utilize these Google features and organize your life from the palm of your hand! . . . . . Page 7

## Senior Care: Information for Caregivers and Family

Being a caregiver is not easy. No two situations are alike. Learn effective strategies to approach the challenges of caring for an aging loved one. . . . . Page 10