



Delta College

LifeLong Learning

SPRING 2015

SPRING HAS SPRUNG

SOME GREAT OPPORTUNITIES
at Delta College!

What's Inside?

FOR WORK

JOB TRAINING

| | |
|--|---|
| Certified Wedding Planner | 2 |
| Child Development for CDA & Assessment Preparation | 2 |
| CompTIA™ Certification Training | 3 |
| Correctional Officer Training Academy | 1 |
| Home Inspector | 3 |
| Medical Administrative Assistant | 4 |
| Medical Insurance Billing & Coding | 5 |
| Microsoft Office 2013 Professional Certification | 3 |
| Mobile Web Developer | 6 |
| Phlebotomy | 5 |
| Real Estate Fundamentals | 6 |
| Travel Agent Training | 6 |
| Web Design Professional | 6 |

PROFESSIONAL DEVELOPMENT

| | |
|--|----|
| Accounting Fundamentals | 7 |
| Basic Life Support (BLS) for Healthcare Providers | 7 |
| Computer Skills | 7 |
| Creating Web Pages | |
| Introduction to CSS3 and HTML5 | |
| Introduction to QuickBooks 2014 | |
| Keyboarding | |
| Electrical License Exam Preparation - Journeyman & Master | 8 |
| GIS Workshop | 8 |
| Human Resource Certificate Series | 9 |
| Benefit Administration Basics | |
| The Human Resources Regulatory Environment | |
| Hiring the Engaged Worker | |
| Workplace Health & Safety | |
| Managing Unemployment Claims to Win | |
| Reaching Peak Organizational Performance | |
| MIOSHA Safety Training | 8 |
| Job Safety Analysis Made Easy | |
| Behavior-Based Safety: Fundamentals & Implementation | |
| Part 380: Occupational Noise Exposure | |
| Plumbing License Exam Preparation - Journeyman & Master | 8 |
| Project Management | 10 |
| Six Sigma Training | 10 |
| Writing Effective Grant Proposals | 10 |

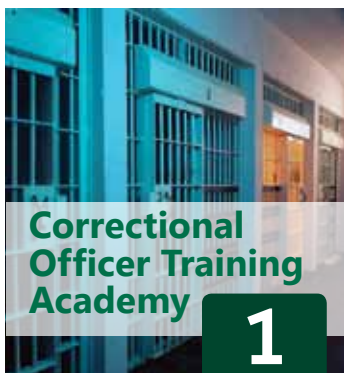
FOR FUN

| | |
|--|----|
| Beginning Writer's Workshop | 11 |
| Certificate in Meditation | 11 |
| Computer Skills | 7 |
| Creating Web Pages | |
| Introduction to CSS3 and HTML5 | |
| Introduction to QuickBooks 2014 | |
| Keyboarding | |
| Digital Photography Series | 12 |
| Discover Digital Photography | |
| Introduction to Photoshop CS6 - for the photographer | |
| Mastering Your Digital SLR Camera | |
| Secrets of Better Photography | |
| GED® Preparation | 13 |
| Genealogy Basics | 13 |
| Introduction to Natural Health and Healing | 13 |
| Music Made Easy | 13 |
| Motorcycle Safety | 14 |
| Motorcycle Novice | |
| Returning Rider | |
| Speed Spanish | 15 |
| Stocks, Bonds, and Investing: Oh, My! | 15 |
| Uncovering Your Past: Immigration and Family History | 15 |
| Urban Farming Series | 16 |
| Soil Health and Amendments | |
| Starting Seeds and Companion Plants | |
| Growing in Small Spaces | |
| Backyard Poultry: Raising Chickens | |
| Building Your Own Farm Equipment | |
| Taking Your Goods to Market | |
| Walking with Women Who Dared | 15 |

4 Easy Ways to Register

-  In-Person
-  Over the Phone
-  Online
-  By Mail

For complete Registration details, see page 18.



FOR WORK

Job Training



CORRECTIONAL OFFICER TRAINING ACADEMY

Correctional Officers are responsible for supervising prisoners, enforcing rules, and maintaining security in local correctional facilities. Delta College's 160 Hour Correctional Officer Training Academy is approved by the Michigan Sheriffs' Coordinating and Training Council (MSCTC) and will fulfill the training requirement to becoming a Local Correctional Officer. Because the work of correctional officers involves many security-related situations, including potentially violent ones, employers may favor applicants with law enforcement or military experience. Correctional Officers learn about ethics, safety precautions, and crisis management; they also learn self-defense techniques and how to use firearms.

This course includes the following components:

- Booking and Intake (8 hours)
- Correctional Law (16 hours)
- Cultural Diversity (4 hours)
- Custody and Security (24 hours)
- Defensive Tactics (40 hours)
- Ethics in Corrections (2 hours)
- Fire Safety (12 hours)
- First Aid/CPR/AED (8 hours)
- Interpersonal Communications (16 hours)
- Prisoner Behavior (8 hours)
- Report Writing (8 hours)
- Workplace Harassment (2 hours)
- Stress Management (4 hours)
- Suicide Awareness (8 hours)

Prerequisites:

1. Successfully Complete EMPCO Reading/Writing Test and LOCPAT Physical Fitness Test

For details and to register for the EMPCO test visit www.empcos.net.

For details on the MSCTC LOCPAT Physical Abilities Test visit Delta College's Criminal Justice Training website. To register for this test call 989-686-9176.

2. Submit Program Application

The following items must be completed and submitted by the Registration Deadline:

- Application Form
- Release Statement
- Physician's Statement
- Autobiography
- EMPCO Reading/Writing Test results
- MSCTC Physical Fitness Test results
- Pre-Service Candidate Verification Form

Send completed forms to:
Delta College LifeLong Learning
1961 Delta Road
University Center, MI 48710
lifelonglearning@delta.edu

3. Interview with the Delta College Criminal Justice Training Coordinator

4. Program Approval

5. Admission

Students must go through Admission to Delta College. Use Program Code ND.11000.

NOTE: COMPASS® Testing is not required for this program.

6. High School Diploma or GED® Test Credential



Cost: \$1299

Course Number:

CFA-5105

Dates:

5/11/15 - 6/9/15

Time:

Monday - Friday;
8am - 5pm

Location:

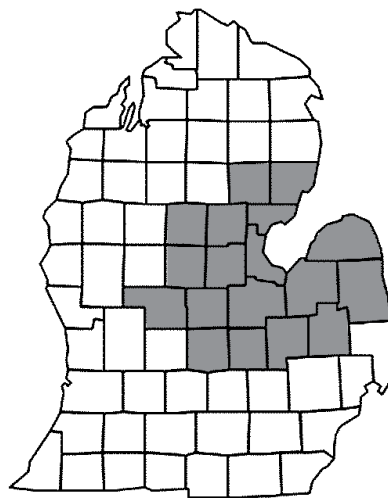
Delta College Main Campus

Instructors:

Michigan Sheriff's Coordinating
and Training Council
approved instructors

Registration Deadline: 4/2/15

1,395 Correctional Officers and Jailers are employed. This number is expected to **increase by 1.8%** over the next four years.



25%

are over the age of 55 and will be retiring soon.

CERTIFIED WEDDING PLANNER

Prepare for a career in wedding and special event planning by mastering the fundamentals of planning, orchestrating, and delivering stunning weddings and parties. This program allows you to earn your certification as a professional wedding and event planner, and will give you an opportunity to put your new skills to work in an optional internship.

In these lessons, you'll get step-by-step training and learn concise formulas for ensuring the success of any social event, from weddings and anniversaries to birthdays and baby showers. Once you've grasped the basics of wedding planning, you'll translate theory into real-world applications as you discover how to cultivate the vendor and client relationships that are crucial to building your business. You'll learn insider techniques on how to market your business and expand your revenue streams in the fun and exciting celebration industry.

With the aid of more than 150 business templates and other resource documents, you'll also gain the financial understanding you need to complement your wedding planning talents. This program provides you with an entire set of financial tools you'll be able to use for years to come, including contracts, business plans, timelines, fee structures,

project plans and service offerings. Each business template is carefully designed to address the specific demands of the wedding and special event planning industry.

The program includes a Dina Manzo's "It's My Party and I'll Plan if I Want To" workshop, which teaches the fundamentals and etiquette involved in proper party planning. It includes lessons on table etiquette, tableware, glassware, and flatware, in addition to proper place setting, menu selection, and food and wine pairing.

Required textbooks are included with this course.



Cost: \$1595

Hours: 340
Start Dates: When it's convenient for you!
Time: Start anytime!
Location: Online

CHILD DEVELOPMENT FOR CDA AND ASSESSMENT PREPARATION

Delta College LifeLong Learning in partnership with the Great Start To Quality Resource Center Eastern Region is now offering a 120 hour comprehensive training opportunity to assist candidates in obtaining their Child Development Associate (CDA) Credential™. A Child Development Associate (CDA) is an individual who has successfully completed the CDA assessment process and has been awarded the Child Development Associate (CDA) Credential™. CDAs are able to meet the specific needs of children and work with parents and other adults to nurture children's physical, social, emotional, and intellectual growth in a child development framework. Earning the CDA Credential has many advantages, including motivating caregivers toward continuing education and providing a platform for professional and career opportunities. Many view the CDA Credential as an instrument for career advancement in the early childhood care and education profession. The CDA Council works to ensure that it is a credible and valid credential, recognized by the profession as a vital part of a coordinated system of professional development. This course is designed for those interested in preparing for the Child Development Associate (CDA) Assessment.

Benefits of The Child Development Associate (CDA) Credential™

- Advance your career
- Meet job requirements
- Reinforce your commitment to early childhood education
- Provide parents with peace of mind
- Understand developmentally appropriate practice

You may earn your credential in the following settings:

- Preschool
- Infant/Toddler
- Family Child Care
- Home Visitor

This course is set up in a blended format:

- 60.5 hours of classroom instruction including group activities
- 59.5 hours of independent on-line study including textbook readings, exercises, and peer discussion boards
- 13 hours of "CDA 2.0" Competency Standards Book assembly

Prerequisites

1. Admission

Students must go through Admission to Delta College. Use Program Code ND.11000.

NOTE: COMPASS® Testing is not required for this program.

2. High School Diploma or GED® Test Credential

It is a requirement that students have attained a high school diploma or GED® test credential (not a high school certificate of completion) prior to registration of this program.

3. Be 18 years of age or older

A textbook is required for this course. Check with the Delta Bookstore. In addition, the CDA 2.0 Competency Standards book is required and available for purchase at www.cdacouncil.org.



Cost: \$575

Course Number: CDX-2000
Overall dates: 4/10/15 - 6/19/15
Classroom dates: 4/10/15 & 4/11/15
4/24/15 & 4/25/15
5/8/15 & 5/9/15
5/22/15 & 5/23/15
6/5/15 & 6/6/15
6/12/15 & 6/13/15
6/19/15
Time: Fridays; 6pm - 9pm
Saturdays; 8am - 4pm



CompTIA™ CERTIFICATION TRAINING

CompTIA™ A+ CERTIFICATION TRAINING

CompTIA A+ certification is the industry standard for validating the skills of entry-level computer technicians. It opens the door to an exciting career in computer technology, and ed2go's online program makes training convenient and interactive.



Cost: \$1695

Hours: 230

CompTIA™ NETWORK+ CERTIFICATION TRAINING

Prepare for a career as a network technician and qualify to take the CompTIA Network+ certification exam as you master basic networking concepts and gain a fundamental knowledge of network design, security, routing, and switching.



Cost: \$1495

Hours: 80

COMPTIA™ SECURITY+ CERTIFICATION TRAINING

Take your first step toward a career as a security professional and prepare yourself for the CompTIA™ Security+ certification exam as you master the basics of system security, network infrastructure, access control, and organizational security.



Cost: \$1495

Hours: 80

Required textbooks are included with these courses.

Start Dates: When it's convenient for you!

Time: Start anytime!

Location: Online

HOME INSPECTOR

For most people, a home is their most costly investment and their most valuable asset, which is why a comprehensive home inspection is a necessary part of the home buying procedure. Hiring the services of a qualified home inspection professional could save buyers a fortune by discovering deficiencies that otherwise may not be found until it is too late. Our mission is to train and enable you to start and operate your own successful home inspection business or to be a significant contributor in an established company.

Textbooks are required for this course.

Check with the Delta Bookstore.



Cost: \$599

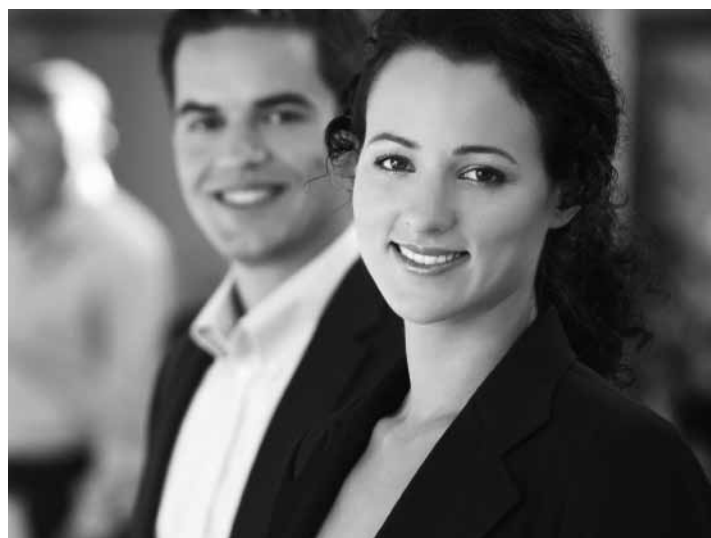
Course Number: CVI-2025

Dates: 3/20/15 - 4/25/15 (skip 4/3 & 4/4)

Time: Fridays; 5:30pm - 9:30pm

Saturdays; 8am - 4:30pm

Location: Delta College Main Campus



MICROSOFT OFFICE PROFESSIONAL CERTIFICATION

MICROSOFT OFFICE SPECIALIST 2013

Microsoft Office 2013 skills are important to have in any profession. Being able to work with Office programs is necessary in today's workplace whether you are preparing for an entry-level position or are already an experienced professional. Developing skills and experience working with Microsoft Word, Excel, PowerPoint, Outlook, and Access will allow you to work independently and efficiently problem solve.

The material is presented in a step-by-step manner, and you will learn by completing readings and hands-on exercises, in addition to watching video presentations. The course also includes quizzes and exams so you can assess your skills at regular intervals.



Cost: \$1995

Hours: 335

Start Date: When it's convenient for you!

Time: Start anytime!

Location: Online

MICROSOFT OFFICE MASTER 2013

Microsoft Office 2013 skills are important skills to have in any profession or workplace. Developing skills and experience working with Microsoft Word, Excel, PowerPoint, and Outlook will allow you to work independently and solve problems.

The material is presented in a step-by-step manner, and you will learn by completing readings and hands-on exercises, in addition to watching video presentations. The course also includes quizzes and exams, so your skills will be assessed at regular intervals.

Through these methods, you will learn essential introductory and advanced Office skills across Microsoft Office's Word, Excel, PowerPoint, and Outlook programs.



Cost: \$1695

Hours: 245

Start Date: When it's convenient for you!

Time: Start anytime!

Location: Online

MEDICAL ADMINISTRATIVE ASSISTANT

Medical Administrative Assistants are members of the supporting cast that helps maintain a health care facility's service and performance. You will play an instrumental role to ensure the efficient operation of the hospital unit and medical office by performing administrative and clerical tasks, such as maintaining medical records, scheduling appointments and medical tests, keeping supplies stocked, and communicating with other health care professionals, patients and visitors. You may also perform other duties such as performing routine and regulatory checks, patient placement and transfer including admission and discharge forms, and specimen labeling. The Medical Administrative Assistant usually works under the supervision of the Registered Nursing staff or the Health Information Administrator. One of your main responsibilities is to act as a liaison between the patients and staff. You will learn the fundamentals of the Medical Administrative Assistant role including the opportunity to apply what you have learned for potential employers in a Clinical/ Internship experience.

These trained individuals may also be known as Health Unit Coordinators, Unit Clerks, Ward Clerks, Patient Admitting, Unit Secretaries, Medical Office Secretaries, or Medical Office Assistants with opportunities to work in either a clinical hospital or a physician's office setting.

This program will give you a jump start into the healthcare field in only 11 weeks!

COURSE FORMAT

Fundamentals of the Medical Administrative Assistant

The first four weeks (75 hours) of the program are spent in a classroom environment learning the fundamentals of the job role including: medical terminology and common abbreviations, customer service and relationship based care, infectious control and universal precautions, working in a team and phone etiquette, HIPPA and patient confidentiality, charting, introduction to EMR systems, specimen labeling, patient placement, unit appearance, unit role play and scenarios. You are evaluated through written exams, class participation, punctuality and attendance.

Clinical Site & Systems Orientation

The next two weeks (40 hours) take place in the hospital setting, introducing you to the clinical site essentials including: Student Passport Alliance, site tour, safety, security and dress code, workplace orientation, customer service, mission, vision and values, hiring practices, site EMR overview, paper charts, consent forms, patient labels, face sheets, customer service, daily regulatory checks, scheduling, filing, telephone, unit stocking and appearance, unit role play and scenarios.

Clinical/Internship Experience

You will spend the next five weeks (100 hours) in the clinical/ internship portion of the program. Here you will gain an invaluable hands-on experience at a local hospital applying the roles & responsibilities learned within the first six weeks. You will train with a preceptor (clinical instructor) during this time. You will perform unit specific duties; coordinate the flow of unit/ floor; perform routine chart checks; act as a liaison between physician, nurse and patient, patient call light and caregiver assignments; maintain overall appearance of unit; and review site hiring practices, application processes and interview role play. An on-going evaluation by the instructor and the preceptor is conducted through individual conferences and written examinations.

CLINICAL REQUIREMENTS

Students are responsible for completing the clinical requirements by the first day of class. See the LifeLong Learning website to obtain your copy of the Student Clinical Requirements packet.

*Textbooks are required for this course.
Check with the Delta Bookstore.*



PREREQUISITES

1. Admission

Students must go through Admission to Delta College.
Use Program Code ND.11000.

2. Program Readiness

Students are exempt from COMPASS® testing with an associate's degree or higher. If exempt, students must present transcripts to LifeLong Learning prior to registration. Students must show program readiness with the following placement levels prior to registration.

- Writing - Level 4, COMPASS® Score 70 and above
- Reading - Level 4, COMPASS® Score 81 and above
- Math - Level 2 COMPASS® (Numerical/Pre-Algebra), Score 44 and above

COMPASS® Testing is offered through the Testing Center located in A-133 on the Delta College Main Campus. Students may reach required placement levels by completing academic course work in combination with COMPASS®, Asset®, or ACT® test scores.

3. High School Diploma or GED® Test Credential

It is our recommendation that students who meet the required prerequisites have also attained a high school diploma or GED® test credential (not a high school certificate of completion) prior to participation and/or completion of this program.



Cost: \$1895

Course Number: CHA-2025

Overall Dates: 4/7/15 - 6/18/15

Fundamentals: 4/7/15 - 4/30/15

Time: Tues., Wed., & Thurs.; 8am - 4pm

Location: Delta College Main Campus

Site Orientation: 5/4/15 - 5/14/15

Time & Location: 3 days a week, 6 hour shifts depending on clinical site.
Assignments will be determined the first week of class.

Clinical Experience: 5/18/15 - 6/18/15

Time & Location: 3 days a week, 7 hour shifts depending on clinical site.
Assignments will be determined the first week of class.

MEDICAL INSURANCE BILLING & CODING

Medical insurance billing professionals work for doctors, hospitals and insurance companies. They complete the paperwork that is submitted to insurance companies on behalf of patients. This course teaches the following medical insurance billing and coding concepts: basic diagnostic and procedure coding, basic insurance concepts and terminology used by health insurance carriers, how to complete claim forms for commercial insurance companies including Blue Cross/Blue Shield of Michigan, Medicare and Medicaid, and a hands-on computer lab that will allow you to work with and navigate the insurance billing software.

The Medical Insurance Billing program has proven to be successful in preparing students to obtain certifications such as: Certified Medical Biller (CMB), Certified Medical Billing Specialist (CMBS), Certified Medical Reimbursement Specialist (CMRS) through American Medical Billing Association or Medical Association of Billers and Certified Coding Associate (CCA), Certified Coding Specialist (CCS), Certified Coding Specialist - Physician Based (CCS-P) through American Health and Information Management Association. Students who successfully complete this program will receive a certificate from Delta College.

*Textbooks are required for this course.
Check with the Delta Bookstore.*

Prerequisites:

1. Admission

Students must go through Admission to Delta College.
Use Program Code ND.11000.

NOTE: COMPASS® Testing is not required for this program.

2. HSC-105 Medical Terminology

(Grade C or above prior to registration)

Develops a basic understanding of the spelling and meaning of commonly used prefixes, suffixes, and word roots, and their combining forms. Comprehension of these word parts will allow proper use of words for the development of professional language use in the allied health professions.

3. Ability to type at least 40wpm accurately

4. High School Diploma or GED® Test Credential

It is our recommendation that students who meet the required prerequisites have also attained a high school diploma or GED® test credential (not a high school certificate of completion) prior to participation and/or completion of this program. This recommendation is based on overall student success and hiring standards of many employers in the Great Lakes Bay Region.



Cost: \$825

Course Number: CHA-2005

Dates: 4/28/15 - 6/9/15 (skip 5/26)

Time: Tuesdays & Thursdays; 6pm - 9:45pm

Location: Delta College Main Campus

PHLEBOTOMY

Phlebotomists are important members of the clinical laboratory team. Diagnostic techniques, clinical laboratory technology and automated instruments have greatly increased the volume of and demand for medical laboratory testing performed by Phlebotomists. Delta College's phlebotomy course prepares you to work in a clinical setting as a phlebotomist in accordance with procedures established by the National Committee for Clinical Laboratory Standards. You will be eligible to sit for the American Society of Clinical Pathology exam to become a certified phlebotomist. Phlebotomy is often an excellent stepping-stone to other positions available within the healthcare industry.

CLINICAL REQUIREMENTS

Students are responsible for completing the clinical requirements by the first day of class. See the LifeLong Learning website to obtain your copy of the Student Clinical Requirements packet.

Textbooks are required for this course.

Check with the Delta Bookstore.

PREREQUISITES

1. Admission

Students must go through Admission to Delta College.
Use Program Code ND.11000.

2. Program Readiness

Students are exempt from COMPASS® testing with an associate's degree or higher. If exempt, students must present transcripts to LifeLong Learning prior to registration. Students must show program readiness with the following placement levels prior to registration.

- Writing - Level 4, COMPASS® Score 70 and above
- Reading - Level 4, COMPASS® Score 81 and above
- Math - Level 3 COMPASS® (Numerical/Pre-Algebra), Score 44 and above

COMPASS® Testing is offered through the Testing Center located in A-133 on the Delta College Main Campus. Students may reach required placement levels by completing academic course work in combination with COMPASS®, Asset®, or ACT® test scores.

3. High School Diploma or GED® Test Credential

It is our recommendation that students who meet the above prerequisites have also attained a high school diploma or GED® test credential (not a high school certificate of completion) prior to participation and/or completion of this program. This recommendation is based on overall student success and hiring standards of many employers in the Great Lakes Bay Region.



Cost: \$1895

Course Number: CHG-1730

Overall Dates: 4/3/15 - 5/28/15

Lecture: 4/3/15 - 5/3/15

Time: Friday; 5pm - 9pm

Saturday; 8am - 4pm

Sunday; 12pm-6pm

Location: Delta College Main Campus

Clinicals: 5/4/15 - 5/28/15

Time & Location: 4 days a week, 8 hour shifts

Mon.-Fri. between 5am-5pm.

Assignments will be determined the first week of class.

Call us to Register
989.686.9444

MOBILE WEB DEVELOPER

The ever-increasing use of Smartphones worldwide has created a great demand for Mobile Web Developers. Smartphones include a mobile browser that is similar to the traditional desktop browser, enabling millions of mobile users to browse the web on their devices instead of a traditional computer.

With more and more users accessing websites using mobile devices, businesses and organizations must adjust their websites to improve mobile experience. Although most mobile browsers can display a scaled version of a traditional website, mobile-friendly websites make it much easier for users to browse, find the information they need, and make purchases. This is especially important for e-commerce and consumer-focused websites and will become more important as more Smartphone users consult their phones to browse content, buy products, and access online services.

These changes are expected to continue to drive growth in markets such as Mobile Web Development and Mobile App Development for years to come. You can become a Mobile Web Developer, and, in this course, you'll learn the latest technologies to prepare you for a career.

Required textbooks are included with this course.



Cost: \$2295

Hours: 280
Start Dates: When it's convenient for you!
Time: Start anytime!
Location: Online



REAL ESTATE FUNDAMENTALS

The purchase or sale of a home or investment property is one of the most significant and complicated financial events in a person's life. Because of this, most people tend to seek assistance from a sales agent when buying or selling real estate. This 44 hour course is approved by the Michigan Department of Labor & Economic Growth Bureau of Commercial Services - Licensing Division. The Real Estate Fundamentals program has proven to be successful in preparing students to obtain a Real Estate Salesperson License in the State of Michigan.

*Textbooks are required for this course.
Check with the Delta Bookstore.*



Cost: \$599

Course Number: CBR-1003
Dates: 4/16/15 - 5/21/15
Time: Tuesdays & Thursdays; 6pm - 10pm
Location: Delta College Main Campus

TRAVEL AGENT TRAINING

The Travel Agent Online Training Program will teach you all you need to know to start a travel career. You will learn about the airline industry, ground transportation, hotels and resorts, cruises, tours, international and domestic travel, reservations and pricing, specialty travel, and more.

This online program consists of three modules. You will first participate in a travel career development program, which will teach you the basics of the travel industry, followed by a second module in which you will study geography for travel professionals, focusing on destinations all over the world that you are most likely to recommend and sell to your clients. In the final module you will choose the GDS computer reservation system you wish to study. Your facilitator will help you to select the proper GDS system to best achieve your career goals.

Required textbooks are included with this course.



Cost: \$1795

Hours: 250
Start Dates: When it's convenient for you!
Time: Start anytime!
Location: Online

WEB DESIGN PROFESSIONAL

Are you looking for a career that stimulates your logical and creative sides in a fast-paced, ever-changing industry? A career in web design may be what you are looking for.

You will start with the basics of HTML, CSS, and JavaScript and advance to HTML5 to learn the technologies that drive the functionality of websites. You will then learn about color theory and typography and develop a strong foundation in building client relationships and organizing their projects. In the last part of the course, you will learn the tools of the trade: Adobe Photoshop, Dreamweaver, and Flash.

Every great site needs more than functionality. It needs a fresh, unique look, a tone to convey the company or organization's products, services, and message. With the skills you learn in this program, you can do just that.



Cost: \$2995

Hours: 350
Start Dates: When it's convenient for you!
Time: Start anytime!
Location: Online

Call us to Register
989.686.9444

FOR WORK

Professional Development



ACCOUNTING FUNDAMENTALS

Demand for accounting professionals currently exceeds supply. If you're interested in increasing your financial awareness while also gaining a marketable skill, this course is for you. You'll learn the basics of double-entry bookkeeping, as well as how to analyze and record financial transactions. You'll get hands-on experience with handling accounts receivable, accounts payable, payroll procedures, sales taxes, and various common banking activities. We'll cover all the bases, from writing checks to preparing an income statement and closing out accounts at the end of each fiscal period. Whether you're a sole proprietor looking to manage your business finances or you simply want to gain an understanding of accounting basics for career advancement or for personal use, this course will give you a solid foundation in financial matters.



Cost: \$99

Hours: 24
Start Dates: 4/15/2015
5/13/2015
6/17/2015
7/15/2015

Time: When it's convenient for you!
Location: Online

BASIC LIFE SUPPORT (BLS) FOR HEALTHCARE PROVIDERS

The Basic Life Support (BLS) for Healthcare Providers classroom course is designed to provide a wide variety of healthcare professionals the ability to recognize several life-threatening emergencies, provide CPR, use an AED, and relieve choking in a safe, timely and effective manner. This course is for healthcare professionals who need to know how to perform CPR, as well as other lifesaving skills, in a wide variety of in-hospital and out-of-hospital settings. Upon completion of this 4 hour course and a mandatory written exam, students will be able to respond to and cardiac and respiratory emergencies in their healthcare environments and will receive certification for 2 years.



Cost: \$59

Course Number: CHG-2113
Date: 3/20/15
Time: Friday; 8am - 12:30pm
Location: Delta College Main Campus

Call 989.686.9444 to register
or for additional dates.

COMPUTER SKILLS

CREATING WEB PAGES

Learn the basics of HTML so you can design, create, and post your very own site on the Web.



Cost: \$99

Hours: 24
Time: When it's convenient for you!
Location: Online

INTRODUCTION TO CSS3 AND HTML5

Learn to create state-of-the-art Web sites using modern CSS3 and HTML5 techniques.



Cost: \$99

Hours: 24
Time: When it's convenient for you!
Location: Online

INTRODUCTION TO QUICKBOOKS

Gain control of your business as you learn to use this powerful accounting software to create and print invoices, track your payables and receivables, and more.



Cost: \$99

Hours: 24
Time: When it's convenient for you!
Location: Online

KEYBOARDING

Learn how to touch-type or improve your existing typing skills using Keyboarding Pro 5.



Cost: \$99

Hours: 24
Time: When it's convenient for you!
Location: Online

JOURNEYMAN/MASTER ELECTRICAL LICENSE EXAM PREPARATION

Taught by a local expert, these 35-hour, state-approved courses will prepare you for the State of Michigan Electrical License Exam. These courses are designed for apprentices and journeymen presently working in the field of electrical construction and maintenance. This course is highly recommended for those who have four years experience as an apprentice in the electrical trade and plan to take the State of Michigan Journeyman Electrical License Exam or for those who have had a Michigan State Journeyman's Electrician's license for two years and plan to take the State Master Electrical License Exam.



Cost: \$425

Course Number: CVE-1008 or CVE-2010
Dates: 4/24/15 - 5/9/15
Times: Fridays; 5:30pm - 9:30pm
Saturdays; 8am - 4pm

JOURNEYMAN/MASTER PLUMBING LICENSE EXAM PREPARATION

Delta College's 24-hour, state-approved preparation courses will assist you in preparing for the State of Michigan Plumbing License Exam. These courses are designed for apprentices and journeymen presently working in the field of plumbing construction and maintenance. This course is highly recommended for those who have four years experience as an apprentice in the plumbing trade and plan to take the State of Michigan Journeyman Plumbing License Exam or for those who have had a State of Michigan Journeyman's Plumbing license for two years and plan to take the State Master Plumbing License Exam.



Cost: \$359

Course Number: CVP-1014, CVP-1016
Dates: 5/1/15 - 5/9/15
Times: Fridays; 5:30pm - 9:30pm
Saturdays; 8am - 4pm

MIOSHA SAFETY TRAINING

JOB SAFETY ANALYSIS MADE EASY

This Job Safety Analysis (JSA) training will provide attendees with the tools and knowledge required to prioritize, create, use, and review a JSA program to enhance their overall Safety and Health Management System.



Cost: \$90

Course Number: CVI-2087
Dates: 3/24/15
Time: Tuesday; 9am - 12:30pm
Location: Delta College Planetarium, Bay City

BEHAVIOR-BASED SAFETY: FUNDAMENTALS & IMPLEMENTATION

Behavioral safety is the application of behavior analysis to work, specifically, safe and unsafe performance of a task. Systems are analyzed to identify what is motivating safe or unsafe performance. Systems can then be modified to improve performance in a positive method.



Cost: \$120

Course Number: CVI-2088
Dates: 4/16/15
Time: Thursday; 9am - 4pm
Location: Delta College Planetarium, Bay City

PART 380 OCCUPATIONAL NOISE EXPOSURE

This hands-on seminar will cover hearing loss and how it can occur; determining when and why to conduct noise monitoring; determining when a Standard Threshold Shift (STS) occurs, noise training requirements, noise control technologies and how to select proper hearing protection.



Cost: \$120

Course Number: CVI-2086
Dates: 5/14/15
Time: Thursday; 9am - 4pm
Location: Delta College Planetarium, Bay City

INTRODUCTION TO GIS

What is GIS and how do you use it to create and interact with maps and data sources? This powerful computer system can be used to create "smart" maps and can provide robust analytical tools as a means of solving problems and answering questions related to location-related data and information. It is used for countless different applications for everything from disaster management to market research analysis. GIS is a well-established technology in a rapidly growing field referred to as geospatial technologies, which encompasses many types of methods and techniques for the collection, analysis, modeling, and visualization of geospatial data.

GIS skills are in demand for jobs related to engineering, planning, utilities, management, transport/logistics, insurance, telecommunications, natural resources and business. For that reason, GIS and location intelligence applications can be the foundation for many location-enabled services that rely on analysis and visualization.

GIS applications are tools that allow users to create interactive queries (user-created searches), analyze spatial information, edit data in maps, and present the results of all these operations. This session will include discussion of basic concepts of GIS along with hands-on exercises using ESRI's ArcGIS software. This workshop also serves as a preview of GIS 101: Introduction to Geographic Information Systems, a 3 credit, fully transferable, academic class that is offered at Delta College.

Outcomes:

- Explain and describe the basic concepts and components of GIS
- Learn how to query and manipulate spatial and attribute data
- Practice joining and mapping tabular data
- Explore applications of GIS to visualize, identify, and analyze information, questions and problems from a spatial perspective



Cost: \$49

Course Number: CVX-1090

WINTER/SPRING SESSION #1

Date: 4/17/15
Time: Friday; 9am - 11am
Location: Delta College Main Campus

WINTER/SPRING SESSION #2

Date: 4/17/15
Time: Friday; 1pm - 3pm
Location: Delta College Main Campus

HUMAN RESOURCE CERTIFICATE SERIES

Register for individual sessions or the full series!

This series will provide you with a broad overview of the Human Resources function in business. Receive a discounted rate and a Human Resources Certificate when you register for the full series of six classes.



Cost: \$399

Course Number: CBE-1475
Overall Dates: 5/7/15 - 6/11/15
Times: Thursdays; 5:30pm - 9:30pm



BENEFIT ADMINISTRATION BASICS

Benefit design, selection and administration forms are the backbone of the HR function. Learn how to maximize benefit dollars through employee and industry benefits surveys, how to select the right vendor and how to negotiate the right benefits package to enhance recruitment and retention efforts.



Cost: \$69

Course Number: CBE-1476
Date: 5/7/15
Time: Thursday; 5:30pm - 9:30pm

WORKPLACE HEALTH & SAFETY

Employee health and safety is one of the single greatest challenges among organizations seeking to maximize productivity and reduce benefits exposure. Learn Federal laws impacting health and safety, practices to improve safety and lessen injury rates, and steps to ensure employee health and wellness with an eye toward full-functioning productivity.



Cost: \$69

Course Number: CBE-1479
Date: 5/28/15
Time: Thursday; 5:30pm - 9:30pm

THE HUMAN RESOURCES REGULATORY ENVIRONMENT

The HR regulatory environment is thick with acronyms – ADA, COBRA, ERISA, FMLA and HIPAA. Learn the background and guidance behind these and other regs and helpful resources to ensure organizational compliance. Upon completion of this course, students will be able to: Recognize the names behind the most common regulatory acronyms; Explain the role of HR regs; Recognize how employers can be compliant; and, Identify when additional resources are needed to ensure compliance.



Cost: \$69

Course Number: CBE-1477
Date: 5/14/15
Time: Thursday; 5:30pm - 9:30pm

MANAGING UNEMPLOYMENT CLAIMS TO WIN

State of Michigan unemployment insurance premiums can cost employers upwards of \$1,000 annually for each employee. Keep costs down by learning policies and procedures to prevent inappropriate claims from being awarded, methods of protest, and procedures to follow during protest hearings.



Cost: \$69

Course Number: CBE-1480
Date: 6/4/15
Time: Thursday; 5:30pm - 9:30pm

HIRING THE ENGAGED WORKER

Engaged employees are more productive, creative and positive than their disengaged co-workers. Employers with a greater number of engaged workers are more profitable and better able to cope during economic challenges. Learn research-based techniques to find, hire and orient engaged workers and best practices to encourage engagement throughout the enterprise.



Cost: \$69

Course Number: CBE-1478
Date: 5/21/15
Time: Thursday; 5:30pm - 9:30pm

REACHING PEAK ORGANIZATIONAL PERFORMANCE

Business leaders must look beyond today's staffing and benefits needs to integrate the human resources function into the organization's future viability. The tools of this integration are strategic planning, financial analysis, risk management and organizational development, all of which will be covered with the aim of ensuring a productive, profitable enterprise.



Cost: \$69

Course Number: CBE-1481
Date: 6/11/15
Time: Thursday; 5:30pm - 9:30pm

PROJECT MANAGEMENT

Project management career opportunities are increasing even when the job market is challenging. Developing the project management skills employers demand can improve your marketability and may be transferrable from one industry to another which provides you with more flexibility.

In this program, you will learn the knowledge and skills essential to project managers and those who work on projects in other support roles. The materials in this program are aligned with the internationally recognized standards of project management. This program is oriented by knowledge areas such as time, cost, risk, and communications. Each lesson focuses exclusively on a single topic so that you can more easily grasp the concept.

Once complete, students will meet or exceed the educational prerequisites for either the Certified Associate In Project Management (CAPM)® or the Project Management Professional (PMP)® certification offered through the Project Management Institute.



Cost: \$1695

Hours: 100
Start Dates: When it's convenient for you!
Time: Start anytime!
Location: Online

WRITING EFFECTIVE GRANT PROPOSALS

Preparing successful grant proposals to receive funding from corporations or foundations requires careful research, meticulous preparation, and graceful writing. Grant administrators tell us that many grant requestors have no real understanding of the proposal writing process and as a result, their worthy causes lose out.

If you learn how to avoid the errors that lead to the rejection of your proposal, you will be better prepared to help the causes you most admire. This course will walk you through all of the essential steps—including an important discussion of what you must do when the grant arrives!

In this course, you'll learn how to become fully familiar with the institution or project for which you are requesting support. You'll get valuable guidance in preparing a background statement and a brief financial statement to support your request. You'll also research some charitable foundation and corporate giving sources.

Then, you'll learn how to put everything together so you can assemble, write, and submit complete grant proposals to foundations, corporations, and wealthy individuals for any number of your pet projects.



Cost: \$99

Hours: 24
Start Dates: 4/15/2015
5/13/2015
6/17/2015
7/15/2015
Time: When it's convenient for you!
Location: Online

SIX SIGMA TRAINING

SIX SIGMA GREEN BELT

Six Sigma is a quality improvement methodology structured to reduce product or service failure rates to a negligible level (roughly 3.4 failures per million opportunities). Six Sigma companies typically spend less than five percent of their revenues addressing and repairing quality problems.

To achieve these levels, the Six Sigma process encompasses all aspects of a business, including management, service delivery, design, production, and customer satisfaction. As a philosophy, Six Sigma drives business culture and requires a nearly flawless execution of key processes, making Six Sigma a high standard for companies and individuals to achieve. By reducing process variation, Six Sigma frees an organization to focus on improving process capability. As sigma levels increase, the cost of poor quality decreases and profitability increases. This is why Six Sigma is highly associated with the delivery of consistent, world-class quality.

The Six Sigma Green Belt Online Training Program provides you with an overview of the Six Sigma concepts and tools, including Six Sigma deployment practices, project development, and the DMAIC problem-solving approach. Once you've completed this program, you'll be ready to successfully participate in a Six Sigma team.



Cost: \$1895

Hours: 100
Start Dates: When it's convenient for you!
Time: Start anytime!
Location: Online

SIX SIGMA BLACK BELT

The Black Belt Training Program flow follows the DMAIC methodology. You'll learn the appropriate tools and concepts at each stage of project deployment. Since software will be used for data analysis, the program material concentrates on the application and use of the tools, rather than on detailed derivation of the statistical methods.

Your analytical and problem-solving skills will be challenged by workshops, which are incorporated extensively throughout the training. Once you've successfully completed the program, you'll be eligible to work toward a Black Belt Certification through the International Quality Federation (<http://iqf.org>). Achieving this certification is at your discretion and dependent upon you meeting the criteria the International Quality Federation sets; certification is not automatic upon completion of this program or tied to the accredited college or university you registered through.



Cost: \$2695

Hours: 200
Start Dates: When it's convenient for you!
Time: Start anytime!
Location: Online

FOR FUN

Investing in You!



BEGINNING WRITER'S WORKSHOP

If you've always wanted to write but have no idea where to start, this course will demystify the process for you. You'll get a taste of the writing life, improve your writing skills, and develop new ways to stretch your creative muscles.

This exciting, hands-on course for the creative writing novice is filled with challenging exercises, expert advice, and plenty of direct support and encouragement. As you work your way through the lessons, you'll develop your own short, creative fiction or nonfiction piece.

Our emphasis in this course is on developing your skills through practice, so you'll spend more time writing than reading. You'll master important concepts by completing enjoyable writing exercises and assignments, and you'll discover a variety of strategies and techniques the pros use to develop characters, create a compelling point of view, build interest through dialogue, and add meaning to your stories.



Cost: \$99

Hours: 24
Start Dates: 4/15/2015
5/13/2015
6/17/2015
7/15/2015

Time: When it's convenient for you!
Location: Online



CERTIFICATE IN MEDITATION

Although there are many ways to meditate and many different forms of meditation, they all share a unifying characteristic: each focuses on intentionally training a person's attention and concentration. Meditation practices have been used by cultures around the world for thousands of years.

In this certificate program, you'll explore the many meditation techniques that can be used to support the mind-body connection and promote healing and wellness. You'll gain an overview of the religious roots of meditation in Hinduism, Buddhism, Taoism, Judaism, Christianity, and Sufism, as well as how these techniques can be used by any practitioner, regardless of faith or religious affiliation. The program is designed for health professionals and nurses as well as general consumers, and covers techniques including Transcendental Meditation™, guided imagery and visualization meditation, mindfulness meditation, Osho Kundalini Meditation™, Vipassana meditation, walking meditation, laughter meditation, centering prayer meditation, and concentration meditation.

As you'll learn, meditation's health effects have been well documented. The practice offers improvement of the symptoms of various diseases and allows practitioners to experience a deeper spiritual connection. This program will guide you as you discover how the practice of meditation can be used to increase mindfulness, reduce stress, deal with pain and illness, and support overall well being.



Cost: \$69

Hours: 8
Start Dates: 4/15/2015
5/13/2015
6/17/2015
7/15/2015

Time: When it's convenient for you!
Location: Online

Call us to Register
989.686.9444

DIGITAL PHOTOGRAPHY SERIES

DISCOVER DIGITAL PHOTOGRAPHY

Discover Digital Photography introduces the technology that has catapulted the photographic world into the 21st century. You'll explore a broad overview of the basics of digital photography, including equipment, software, and practical uses. We'll discuss different types of digital cameras, all of which offer a wide array of photographic options.

We'll explore a number of software packages, and you'll learn how to compose your shots when you know you have digital editing available to you. You'll also find out about your digital storage options—on the camera, the computer, and even beyond into cloud storage and online backups. We'll review how to size images for use on your computer, the Internet, and with social media. You'll also get a good introduction to printing images and making decisions about your archival options. And we'll discuss how industry and business use digital imaging today.



Cost: \$99

Hours: 24
Start Dates: 4/15/2015
5/13/2015
6/17/2015
7/15/2015

Time: When it's convenient for you!
Location: Online

PHOTOSHOP CS6 FOR THE PHOTOGRAPHER

Adobe's Photoshop CS6 is a powerful software solution providing support and specialized editing tools for digital photographers and graphic artists. In this course, you'll master techniques to make the most of your digital images and add a professional polish to your work. Designed for those with no image-editing experience, this class will take you from novice to accomplished photo editor.

As the high-end program in Adobe's collection of photo-editing software, Photoshop CS6 gives you all the tools you need to create outstanding digital images. Because this course is specifically targeted at photographers, you'll come away with a collection of useful techniques and quickly start seeing amazing results in your images!



Cost: \$99

Hours: 24
Start Dates: 4/15/2015
5/13/2015
6/17/2015
7/15/2015

Time: When it's convenient for you!
Location: Online

MASTERING YOUR DIGITAL SLR CAMERA

Get control of your digital SLR camera! In this course, you'll break through the technology barrier and learn how to use your DSLR to take beautiful photos.

You'll start out by learning about the many features and controls of your DSLR and look at the lenses you need for the kind of photography you enjoy. Next, we'll explore exposure controls. You'll learn about metering, exposure compensation, managing aperture, shutter speed, and ISO.

Then we'll turn our attention to flash photography, managing camera controls, photo files, and even working in manual mode. With these skills, you'll be able to take your photography to the next level. Finally, the course explores high dynamic range photos and how to master those difficult and tricky exposure situations.

By the end of this course, you'll truly be a DSLR master, and most of all, you'll be able to use your camera to take the photos you've always dreamed of.



Cost: \$99

Hours: 24
Start Dates: 4/15/2015
5/13/2015
6/17/2015
7/15/2015

Time: When it's convenient for you!
Location: Online

SECRETS OF BETTER PHOTOGRAPHY

Master your digital camera and learn the secrets behind outstanding photos! Whether you have a digital SLR, a point-and-shoot camera, or something in between, you'll learn how to use it the way you want to in this hands-on course!

You'll see how to choose the best photographic equipment for you and how to compose images with style. Exposure topics like aperture, shutter speed, metering, and ISO settings will all make sense as we break them down into simple concepts. If you want to work with manual exposure on your digital SLR, we cover that, too! We'll also explore natural and artificial lighting, freezing or blurring motion, portraiture, children's photography, pet photography, photojournalism, and digital editing options.

After six short weeks, you'll see the difference in your photographer's eye and your photos! Secrets of Better Photography is also an excellent class to prepare you for the more advanced class, Travel Photography for the Digital Photographer.



Cost: \$99

Hours: 24
Start Dates: 4/15/2015
5/13/2015
6/17/2015
7/15/2015

Time: When it's convenient for you!
Location: Online

GED® PREPARATION

If you're comfortable reading a high school textbook, doing math basic operations like fractions and decimals without a calculator, and writing a short letter in English, you're ready to get started! This course will help you analyze your strengths and weaknesses so you can focus your studying on the areas that you need most. You'll get the basics of what you need to know to succeed on the four 2014 GED® test modules: Reasoning Through Language Arts, Social Studies, Science, and Mathematical Reasoning. After completion of this course, you should be well-equipped to take—and pass—the GED® test!



Cost: \$99

Hours: 24
Start Dates: 4/15/2015
5/13/2015
6/17/2015
7/15/2015

Time: When it's convenient for you!
Location: Online

INTRODUCTION TO NATURAL HEALTH AND HEALING

Would you like to learn more about natural health but don't know where to start? If so, then this is the course for you! We'll discuss the various stages of health and illness, and you'll discover that true health means wholeness of the mind, body, and spirit. You'll start a personal health journal to evaluate your current lifestyle and observe how your behaviors can affect your health. We'll also explore naturopathy, which seeks ways for the body to heal itself. You'll find out about proper breathing techniques that enhance health, and you'll learn the value of hydrotherapy, diet, biorhythms, and fasting. We'll also examine using the power of the mind for healing the body—discussing brain function tests, visualization, and relaxation therapies. Then we'll delve into vitamins, minerals, antioxidants, free radicals, and the basic requirements that constitute a healthy diet. We'll also look at herbal healing, aromatherapy, body therapies, massage techniques, osteopathy, chiropractic, T'ai Chi, reflexology, yoga, Feng Shui, therapeutic touch, natural remedies for common emergencies, and much more.



Cost: \$99

Hours: 24
Start Dates: 4/15/2015
5/13/2015
6/17/2015
7/15/2015

Time: When it's convenient for you!
Location: Online

Call us to Register
989.686.9444

GENEALOGY BASICS

Tracing your family's history is a fascinating journey. Who will you discover? Genealogy Basics will help you understand the genealogy research process and the way we interpret the information we find. This course guides you through the search process for family names using several subscription-based Web sites, which you can access while you're enrolled in the class. Along the way, you'll learn through hands-on examples that help you dig deeper into your family's past. You'll develop a strategy to accomplish your objectives, evaluate the results, and share that information with others. You'll discover, in simple terms, where to look, who to contact, and how to make your family history come alive. Was it truth or goof? Where's the proof? Find out why close counts not only in horseshoes, but also in hunting your heritage.



Cost: \$99

Hours: 24
Start Dates: 4/15/2015
5/13/2015
6/17/2015
7/15/2015

Time: When it's convenient for you!
Location: Online

MUSIC MADE EASY

If you enjoy music and would like to know more about what makes it work, this is the course for you. You'll gain a complete understanding of rhythm, melody, and harmony, and you'll be able to recognize pitches on the musical staff and on the keyboard.

Each lesson will build on previous lessons, while also introducing new musical concepts. Your course begins with an introduction to rhythm and the various aspects of rhythm; including beat, meter, note, and rest values.

You'll then learn about the role of melody in music, and you'll gain proficiency in identifying pitches by octave, building major scales, and understanding the role of keys in creating melodies.

You'll explore the keyboard in full detail, with an emphasis on the structure of major scale and the signatures of major keys. And you'll understand the many significant contributions early music theorists made to our understanding of music.

You'll also be able to build intervals, major scales, and chords. By the time you complete this comprehensive and full-featured course, you'll be able to read, write, and even play simple musical pieces on a keyboard.



Cost: \$99

Hours: 24
Start Dates: 4/15/2015
5/13/2015
6/17/2015
7/15/2015

Time: When it's convenient for you!
Location: Online

MOTORCYCLE SAFETY

Since 1982, Delta College has been a sponsor of the Michigan Department of State's Motorcycle Safety Program. On average, the Delta College Motorcycle Program trains over 650 students each year! Delta College currently has 20 nationally certified MSF Rider Coaches on staff. Their instruction experience ranges from 1 to 25 years. All are veteran riders, some with over 40 years of riding experience.

MOTORCYCLE NOVICE

Cost: \$25 (non-transferable, non-refundable)

The Novice course is required for anyone who wishes to obtain a motorcycle endorsement. This course is designed for riders with little or no riding experience, but who wish to become familiar with motorcycle rules and regulations, and develop skills to become confident riders. You must be at least 15 years of age with a drivers permit and able to ride a two-wheel bicycle. This class focuses on the development of the basic riding skills: turning, shifting and braking. In this course you will receive approximately 20 hours of instruction, including 6 in the classroom and 14 on the range. Upon successful completion of our state-approved Motorcycle Safety Foundation course, the Secretary of State may waive the riding skills test required for a cycle endorsement. In addition, you must take a Motorcycle Safety course if you fail the state skills test twice or if you are under 18 years of age.

Motorcycles are provided by Delta College.

WEEKDAY MORNINGS

Monday - Friday, 9:00am - 1:00pm

5/18/15 - 5/22/15

6/22/15 - 6/26/15

7/6/15 - 7/10/15

7/20/15 - 7/24/15

WEEKDAY EVENINGS

Monday - Friday, 5:30pm - 9:30pm

5/4/15 - 5/8/15

5/11/15 - 5/15/15

6/1/15 - 6/5/15

6/8/15 - 6/12/15

6/15/15 - 6/19/15

7/6/15 - 7/10/15

7/13/15 - 7/17/15

7/27/15 - 7/31/15

WEEKENDS

Fri., 5:30pm-9:30pm; Sat./Sun., 8:00am-6:00pm

5/8/15 - 5/10/15

5/15/15 - 5/17/15

5/29/15 - 5/31/15

6/5/15 - 6/7/15 (Two sessions)

6/12/15 - 6/14/15

6/19/15 - 6/21/15

6/26/15 - 6/28/15 (Two sessions)

7/10/15 - 7/12/15

7/17/15 - 7/19/15

7/24/15 - 7/26/15 (Two sessions)

7/31/15 - 8/2/15 (Two sessions)

8/7/15 - 8/9/15

8/14/15 - 8/16/15

8/21/15 - 8/23/15



RETURNING RIDER

Cost: \$25 (non-transferable, non-refundable)

This one day course is designed for the experienced, but unlicensed, rider to become licensed and legal. Many experienced, licensed riders use this course as a refresher. Topics will include braking, counter steering, turning, speed judgment, and other techniques necessary for the experienced rider to operate a motorcycle skillfully and safely. Your riding abilities will be evaluated during the first two range exercises. These skills include using the clutch/throttle, stopping, negotiating roadway turns and curves, and smooth shifting. You will not be able to continue the class if you do not demonstrate adequate basic riding skills and no refund will be given. Successful completion will waive the Secretary of State riding skills test.

Delta College recommends that you provide your own motorcycle. Your cycle must be titled, properly registered, and display a valid license plate. You must also provide proof of insurance and the bike must pass a safety inspection.

5/16/2015

Saturday, 9am - 5pm

5/17/2015

Sunday, 9am - 5pm

6/13/2015

Saturday, 9am - 5pm

6/14/2015

Sunday, 9am - 5pm

REQUIRED COURSE MATERIALS FOR NOVICE & RETURNING RIDER CLASSES

- Driver's license, if 15 years of age - permit & waiver form (on web).
- D.O.T. approved helmet.
- Long pants only - no shorts (jeans are suggested).
- Boots - no high heels or tennis shoes (ankles must be covered).
- Eye protection - goggles or face shield are recommended. Prescription glasses, shatterproof safety glasses and sunglasses are acceptable due to the low speeds on the course.
- Gloves - fitted and full fingered (leather is suggested).

Failure to bring any of these materials will prohibit you from participating in class.

Due to the high demand for this program, Delta College LifeLong Learning makes every effort to fill open seats. Registered students must arrive on time or risk losing their seat to stand-by candidates.

Visit www.delta.edu/lifelonglearning for more details about our stand-by process.



SPEED SPANISH

Imagine yourself speaking, reading and writing Spanish. Now you can with Speed Spanish! This course is designed for anyone who wants to learn Spanish pronto. You'll learn six easy recipes for gluing Spanish words together to form sentences. In no time at all, you'll be able to go into any Spanish speaking situation and converse in Spanish.

¡Qué Bueno!



Cost: \$99

Hours: 24
Start Dates: 4/15/2015
5/13/2015
6/17/2015
7/15/2015

Time: When it's convenient for you!
Location: Online

STOCKS, BONDS, AND INVESTING: OH, MY!

Looking for a good solid class in the basics of stocks, bonds, finance, and investing? Haven't the slightest clue how to prepare for retirement, pay for college, or even manage your personal finances? Wish you had some guidance to put your finances into clear and understandable perspective? And do you wish you could do it all without having to pay a broker or a financial advisor? Well, look no further. The class you need is right here!

Stocks, Bonds, and Investing; Oh My! is an enjoyable class that walks you through the fundamentals of investing. The course will not only teach you about the stock markets, 401k plans, and retirement, but it will also address personal financial issues that are often ignored, but absolutely essential, to your success as an investor.

This course won't just throw a bunch of terms at you, expecting you to memorize everything. The instructor takes the time to explain concepts in detail so you understand how and why things work in the investment world. You'll leave this course with a comprehensive and thorough education in personal finance and investment. And you will have provided yourself with the independence, confidence, and peace of mind you'll need to make your own investment decisions.

Full of solid advice and good common sense, this course is bound to make life just a little easier for you.



Cost: \$99

Hours: 24
Start Dates: 4/15/2015
5/13/2015
6/17/2015
7/15/2015

Time: When it's convenient for you!
Location: Online

WALKING WITH WOMEN WHO DARED

Celebrate Women's History Month with Dr. Laura Dull, Professor of History at Delta College! In this interactive workshop you will explore the importance of women in history, participate in a question and answer session, and take part in the Women Who Dared indoor walking and virtual tour. Your contributions are encouraged in order to help determine additional women who should be included in this esteemed group. In addition to a pamphlet detailing the Women Who Dared you will also take away a greater understanding and appreciation of women's history.

You will enjoy leisurely paced walking, indoors on level surfaces.



Cost: Includes light continental breakfast
\$29
\$19 for 50+ Just Like Gold members

Course Number: CDS-1053
Date: 3/18/15
Time: Wednesday; 9am - 11am
Location: Delta College Main Campus

UNCOVERING YOUR PAST: IMMIGRATION AND FAMILY HISTORY

Join Dr. Amy French, Assistant Professor of History at Delta College, for this engaging workshop. Dr. French will begin by discussing immigration to America, emphasizing the ethnic groups that settled in the Great Lakes Bay Region. You will discover why they came, what they did to survive, and how they shaped our region's culture and laws. You will have the opportunity take part during a question and answer segment, learn about oral history, receive hands on practice recording your family's past, and get started on your very own genealogy chart. You will also take home a starter kit that will help you accurately record your family's history.

Working in pairs will be recommended so register with a friend or make new ones at this interactive workshop!



Cost: Includes light continental breakfast
\$29
\$19 for 50+ Just Like Gold members

Course Number: CDS-1054
Date: 5/5/15
Time: Tuesday; 9am - 11am
Location: Delta College Main Campus

URBAN FARMING SERIES

Delta College LifeLong Learning, in collaboration with the Wildroot Food Collective, is offering the Urban Farming series geared toward the active backyard gardener, the chicken enthusiast, or for those who have never grown a vegetable but who understand the value of cultivating awareness of good, clean local foods. Sessions are presented in a classroom environment filled with demonstrations, discussions, and hands-on activities led by local experts actively involved in local farming, sustainability, and food collectives.

As a series participant, you will have the opportunity to discover and master all six topics: Soil Health and Amendments, Starting Seeds and Companion Plants, Growing in Small Spaces, Raising Chickens, Building Farm Equipment, and Taking Your Goods to Market. You will learn about innovative, practical, economical, and easy-on-the-earth methods of modern day urban agriculture.

Register for individual sessions or the full series at a discounted rate!



Cost: \$149

Course Number: CVL-1100

WINTER SERIES #1

Dates: 2/9/15 - 2/25/15

Times: Mondays & Wednesdays
5:30pm - 8:30pm

WINTER SERIES #2

Dates: 3/10/15 - 3/26/15

Times: Tuesdays & Thursdays
5:30pm - 8:30pm



SOIL HEALTH & AMENDMENTS

Healthy farming starts with healthy soil. High producing soil is the foundation for nutrient-rich plants. You will gain an understanding of essential soil structure including determining texture, water holding capacity, pest deterrents, and simple at-home testing. Explore a variety of easy and economical methods to amend poor soil to improve its physical properties with the goal of providing a better root environment.



Cost: \$29

Course Number: CVL-1101

WINTER SESSION #1

Date: 2/9/15

Time: Monday; 5:30pm - 8:30pm

Location: Delta College Main Campus

WINTER SESSION #2

Date: 3/10/15

Time: Tuesday; 5:30pm - 8:30pm

Location: Delta College Main Campus

WINTER SESSION #3

Date: 3/14/15

Time: Saturday; 9:30am - 12:30pm

Location: Delta College Main Campus

STARTING SEEDS & COMPANION PLANTS

Get a head start on the growing season! Enjoy flowers and veggies weeks earlier by starting your own plants from seed. You will learn how to source natural, non-treated seeds, the benefits of growing heirloom varieties, and the supplies needed to get started. Share heat and lighting tips, seed planting know-how, growing and nurturing seedlings, and transplanting them to the garden. So you can pass it forward, we'll demonstrate seed harvesting and storage.



Cost: \$29

Course Number: CVL-1102

WINTER SESSION #1

Date: 2/11/15

Time: Wednesday; 5:30pm - 8:30pm

Location: Delta College Main Campus

WINTER SESSION #2

Date: 3/12/15

Time: Thursday; 5:30pm - 8:30pm

Location: Delta College Main Campus

WINTER SESSION #3

Date: 3/21/15

Time: Saturday; 9:30am - 12:30pm

Location: Delta College Main Campus

GROWING IN SMALL SPACES: RAISED BEDS, COLD FRAMES, HOOP HOUSES

Grow where you are! Don't let limited space keep you from enjoying an abundant and healthy harvest. 'Small Yard' and 'No Yard' farmers will discover the most economical ways to grow good foods in small spaces. You will learn how to design a raise bed, prepare the soil, irrigate, and rotate crops. Share practical tips and structures to extend your growing season with funnels, frames, and row covers. Layer gardening and square foot gardens will also be introduced.



Cost: \$29

Course Number: CVL-1103

WINTER SESSION #1

Date: 2/16/15
Time: Monday; 5:30pm - 8:30pm
Location: Delta College Main Campus

WINTER SESSION #2

Date: 3/17/15
Time: Tuesday; 5:30pm - 8:30pm
Location: Delta College Main Campus

WINTER SESSION #3

Date: 3/28/15
Time: Saturday; 9:30am - 12:30pm
Location: Delta College Main Campus

BACKYARD POULTRY: RAISING CHICKENS

Interest in locally-raised poultry has grown while backyard coops and small-scale farms are working to meet this demand. Raising chickens is easy, inexpensive, and rewarding for everyone - healthy meats, tasty eggs, and valuable compost. Learn how to choose a breed, build a coop, start and care for a flock, and collect and store eggs. Gain the confidence and know-how to butcher your own chickens using the proper equipment, processes, ethical culling, parting and bagging.



Cost: \$29

Course Number: CVL-1104

WINTER SESSION #1

Date: 1/26/15
Time: Monday; 5:30pm - 8:30pm
Location: Delta College Main Campus

WINTER SESSION #2

Date: 2/18/15
Time: Wednesday; 5:30pm - 8:30pm
Location: Delta College Main Campus

WINTER SESSION #3

Date: 3/19/15
Time: Thursday; 5:30pm - 8:30pm
Location: Delta College Main Campus

BUILDING YOUR OWN FARM EQUIPMENT

Finding, buying, and acquiring your own tool kit of farm implements and equipment can be costly. Learn the do-it-yourself approach for designing, modifying, and building usable and practical equipment from retired pieces and found materials. This DIY session will cover pluckers, weeders, and various other down-on-the-small-farm projects including troubleshooting problems and solutions and sharing innovative ideas.



Cost: \$29

Course Number: CVL-1105

WINTER SESSION #1

Date: 1/28/15
Time: Wednesday; 5:30pm - 8:30pm
Location: Delta College Main Campus

WINTER SESSION #2

Date: 2/23/15
Time: Monday; 5:30pm - 8:30pm
Location: Delta College Main Campus

WINTER SESSION #3

Date: 3/24/15
Time: Tuesday; 5:30pm - 8:30pm
Location: Delta College Main Campus

TAKING YOUR GOODS TO MARKET

Profit from your extra produce! Do you always end up growing too much for just your family? Interested in turning a small profit from your produce? Differentiate your farm and garden products from those of competitors! This session will help you develop a plan for getting to the market, understand the economics of selling your product, and offer expert tips for presentation and logistics. Learn several ways to sell their extra produce locally. Defining products, marketing to a targeted group, and logistical and food safety considerations will be discussed. You will leave with a clear plan of action for selling their produce.



Cost: \$29

Course Number: CVL-1106

WINTER SESSION #1

Date: 2/25/15
Time: Wednesday; 5:30pm - 8:30pm
Location: Delta College Main Campus

WINTER SESSION #2

Date: 3/26/15
Time: Thursday; 5:30pm - 8:30pm
Location: Delta College Main Campus

WINTER SESSION #3

Date: 3/28/15
Time: Saturday; 9:30am - 12:30pm
Location: Delta College Main Campus

4 Easy Ways to Register

REGISTER BY PHONE

Register by phone at (989) 686-9444 and make payment by credit/debit card.

REGISTER IN PERSON

Register in person with the LifeLong Learning Office located in the H-wing of Delta College's Main Campus.

REGISTER ONLINE

Students are responsible for making sure prerequisites have been completed and verified prior to online registration. If the class you wish to register for is FULL you must call LifeLong Learning to be added to the WAITLIST.

1. Go to MyDelta (link on top right of www.delta.edu).
2. Select "Register for LifeLong Learning/CEU Sections".
3. At the "Register and Pay" screen, enter the course number (or search by keywords) and hit "SUBMIT" button.
4. Select class from the list provided and hit "SUBMIT" button.
5. Enter your personal information (required) and hit "SUBMIT" button.
6. "Additional Registration Info" screen — Hit "SUBMIT" button when complete.
7. You are now ready to "Pay for Classes". Have your credit card ready and complete all required fields. Hit "SUBMIT" button to complete registration.
8. Upon successful registration, the system will send an e-mail confirmation.

REGISTER BY MAIL

Complete the Registration form found in this catalog and mail with payment. Make checks payable to Delta College.

Mail to: Delta College LifeLong Learning
1961 Delta Rd, H-wing
University Center, MI 48710

QUESTIONS

Call Delta College LifeLong Learning with any questions at 989-686-9444 or email lifelonglearning@delta.edu.

PROGRAM REFUNDS

100% REFUND prior to the start date of program. No refunds authorized on or after the start date. Fees are non-transferable. Some LifeLong Learning programs have non-refundable, non-transferrable fees. Please see website for more details.

The College realizes that on occasion, students may need to request an exception to the withdrawal/refund policy stated in this catalog due to extenuating circumstances. In this case, complete and submit to the LifeLong Learning Office a Request for Refund Exception form with appropriate documentation.

FINANCIAL AID

The Pell grant does not apply to LifeLong Learning programs. Grants and loans you may qualify for:

1. The Board of Trustees Grant: Call 989-686-9080 (Midland/Auburn 1-989-495-4000, ext. 9080.)
To make an appointment, please call the Financial Aid Office at 989-686-9080. Midland: 495-4000, ext 9080.
2. Michigan Works! - Contact your local office.
Saginaw (989-249-5232), Bay (989-667-0500) and Midland (989-631-3073) counties. Funding may be available if you qualify. Eligibility requirements apply.

PAYMENT DEADLINE

Payment is due at the time of registration for all LifeLong Learning Programs. Full payment of course fees at the time of registration is required to complete registration. When you register, a seat is reserved for you. This obligates you to pay fees for that seat. If your payment is not sufficient or subsequently adjusted for changes in scholarship or sponsor authorization, Delta College reserves the right to drop you for non-payment or submit your unpaid student account balance to legal collection process. You will be responsible to pay any collection and attorney fees resulting from legal collection process. If you drop from your program, any refund due to you will be processed in accordance with the published LifeLong Learning refund policy.

EMPLOYMENT SERVICES

Delta College Employment Services has numerous resources students can use to gain employment including current job postings, resume and cover letter advice, and interviewing materials. For more information, please call 989-686-9074 or go to www.delta.edu/jobplace.

CAMPUS

The Delta College main campus is located on a 640-acre campus complex in Bay County bordered by Hotchkiss, Mackinaw and Delta Roads. Noted for its beautifully landscaped center garden, the College has miles of nature trails, running and fitness trails, tennis courts, and archery and golf areas, as well as a covered bridge. The main campus site, at University Center, Michigan, lies almost midway between the three counties' major cities of Saginaw, Bay City, and Midland.

TOBACCO-FREE CAMPUS

To help ensure a safe, clean learning environment, smoking and use of tobacco products including e-cigarettes, are not permitted anywhere on Delta College's main campus or the Centers. This includes campus buildings, sidewalks, parking lots, building entrances, common areas and in college-owned vehicles. Students, employees, and visitors who violate the College's tobacco-free policy will be subject to fines starting at \$25.

ACCESSIBILITY ASSISTANCE

Individuals needing accommodations to access camps, programs, services, or events listed in this schedule should contact the LifeLong Learning office at 989-686-9444.

LifeLong Learning personnel has made every reasonable effort to determine that everything stated in this guide was accurate at the time it was printed. Programs offered and related fees, with other matters contained therein, are subject to change or cancellation without notice by Delta College LifeLong Learning for reasons related to student enrollment, or for any reason, at the discretion of the college. Delta College LifeLong Learning reserves the right to cancel class.



Please use one form per student.

Delta College LifeLong Learning • (989) 686-9444 • Fax (989) 758-3639 • lifelonglearning@delta.edu • www.delta.edu/lifelonglearning

Wait... there's more!

Visit our website for a complete list of all
our programs & current schedule.

www.delta.edu/lifelonglearning



Delta College
LifeLong Learning

Delta College

Summer & Camps

Providing Academic Learning
Experiences to the Youth of the
Great Lakes Bay Region



www.delta.edu/summercamps
summercamps@delta.edu :: 989.686.9444
University Center, Michigan



THINK BIG

Delta College has 150 associate degree and certificate
programs to choose from and 145 pre-approved transfer options.

AT DELTA, YOU CAN PICK THE PATH THAT'S PERFECT FOR YOU.

- Short-term training
- Degree programs
- Certificate programs

CHECK OUT OUR FOR-CREDIT PROGRAMS.

www.delta.edu/programs

Get started today.

www.delta.edu/success • admit@delta.edu • 989-686-9093



LifeLong Learning

02-4440

1961 Delta Road, H-Wing

University Center, MI 48710

www.delta.edu/lifelonglearning

Nonprofit Organization

U.S. Postage

PAID

Delta College



**REGISTER
TODAY!**

Phone • In Person
Online • Mail



LifeLong Learning

1961 Delta Road

University Center, MI 48710

989.686.9444

www.delta.edu/lifelonglearning

lifelonglearning@delta.edu



Delta College is an Equal Opportunity Organization, committed to excellence through inclusiveness and diversity.